

## Product datasheet for PH318818

### JAML (NM\_001098526) Human Mass Spec Standard

#### Product data:

Product Type:	Mass Spec Standards
Description:	AMICA1 MS Standard C13 and N15-labeled recombinant protein (NP_001091996)
Species:	Human
Expression Host:	HEK293
Expression cDNA Clone or AA Sequence:	RC218818
Predicted MW:	44.2 kDa
Protein Sequence:	>RC218818 representing NM_001098526 Red=Cloning site Green=Tags(s)  MFCPLKILLPVLLDYSLGLNDLNVSPPELTVHVGDSSALMGCVFQSTEDKCFKIDWTLSPGEHAKDEYV LYYYSNLSVPIGRFQNRVHLMGDILCNDGSLLLQDVQEQADQGTIYCEIRLKGESQVFKKAVVLHVLPEEP KELMVHVGGLIQMGCVFQSTEVKHVTKVEWIFSGRRAKEEIVFRYYHKLMSVEYSQSWGHFQNRVNLVG DIFRNDGSIMLQGVRESDGGNYTCSIHLGNLVFKKTIVLHVSPEEPRTLVTAAALRPLVLGGNQLVIIIVG IVCATILLLPVLLIVKKTGKSSVNSTVLVKNKKTNPETKEKPCHEFERCEGEKHIYSPIIVREVIEE EEPSEKSEATYMTMHPVWPSLRSDRNSLEKSGGGMPKTQQAF  TRTRPLEQKLI SEEDLAANDILDYKDDDDKV
Tag:	C-Myc/DDK
Purity:	> 80% as determined by SDS-PAGE and Coomassie blue staining
Concentration:	>0.05 µg/µL as determined by microplate BCA method
Labeling Method:	Labeled with [U- <sup>13</sup> C <sub>6</sub> , <sup>15</sup> N <sub>4</sub> ]-L-Arginine and [U- <sup>13</sup> C <sub>6</sub> , <sup>15</sup> N <sub>2</sub> ]-L-Lysine
Buffer:	25 mM Tris-HCl, 100 mM glycine, pH 7.3
Storage:	Store at -80°C. Avoid repeated freeze-thaw cycles.
Stability:	Stable for 3 months from receipt of products under proper storage and handling conditions.
RefSeq:	<u>NP_001091996</u>
RefSeq Size:	1957
RefSeq ORF:	1182
Synonyms:	AMICA; AMICA1; CREA7-1; CREA7-4; Gm638
Locus ID:	120425



[View online »](#)

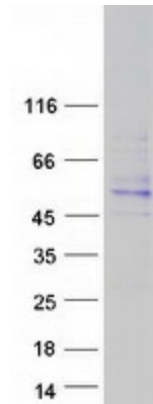
UniProt ID: [Q86YT9](#), [B3KUI3](#)

Cytogenetics: 11q23.3

**Summary:** Transmembrane protein of the plasma membrane of leukocytes that control their migration and activation through interaction with CXADR, a plasma membrane receptor found on adjacent epithelial and endothelial cells. The interaction between both receptors mediates the activation of gamma-delta T-cells, a subpopulation of T-cells residing in epithelia and involved in tissue homeostasis and repair. Upon epithelial CXADR-binding, JAML induces downstream cell signaling events in gamma-delta T-cells through PI3-kinase and MAP kinases. It results in proliferation and production of cytokines and growth factors by T-cells that in turn stimulate epithelial tissues repair. It also controls the transmigration of leukocytes within epithelial and endothelial tissues through adhesive interactions with epithelial and endothelial CXADR.[UniProtKB/Swiss-Prot Function]

**Protein Families:** Transmembrane

### Product images:



Coomassie blue staining of purified JAML protein (Cat# [TP318818]). The protein was produced from HEK293T cells transfected with JAML cDNA clone (Cat# [RC218818]) using MegaTran 2.0 (Cat# [TT210002]).