

Product datasheet for PH318816

RRBP1 (NM_001042576) Human Mass Spec Standard

Product data:

Product Type:	Mass Spec Standards
Description:	RRBP1 MS Standard C13 and N15-labeled recombinant protein (NP_001036041)
Species:	Human
Expression Host:	HEK293
Expression cDNA Clone or AA Sequence:	RC218816
Predicted MW:	108.5 kDa
Protein Sequence:	>RC218816 representing NM_001042576 Red=Cloning site Green=Tags(s)

MDIYDTQTLGVVVFGGFMVSAIGIFLVSTFSMKETSYYEALANQRKEMAKTHHQKVEKKKKEKTVEKKG
KTKKKEEKPNGKIPDHPAPNVTVLLREPVRPAVAVAPTPVQPPIIIVAPVATVPAMPQEKLASSPKDKK
KKEKKVAKVEPAVSSVNSIQVLTSKAAILETAPKEGRNTDVAQSPEAPKQEAPAKKSGSKKGGPPDAD
GPLYLPYKTLVSTVGSVMFNEGEAQRLIEILSEKAGIIQDTWHKATQKGDVPVAILKRQLEEKLLATEQ
EDA AVAKSKLRELNKEMAAEKAKAAAGEAKVKKQLVAREQEITAVQARMQASYREHVKEVQQLQGGKIRTL
QEQLENGPNQLARLQQENSILRDALNQATSQVESKQNAELAKLRQELSKVSKELVEKSEAVRQDEQQRK
ALEAKAAAFKQVLQLQASHRESEEALQKRLDEVSRELCHTQSSHASLRADA EKAQEQQQMAELHSLKQ
SSEAEVRSKCEELSGLHGQLQEARAENSQLTERIRSIEALLEAGQARDAQDVQASQAEADQQQTRLKELE
SQVSGLEKEAIELREAVEQQKVKNNDLREKNWKAMEALATAEQACKELHSLTQAKEESEKQLCLIEAQT
MEALLALLPELSVLAQQNYTEWLQDLKEKGPTLLKHPAPAEPSSDLASKLREAETQSTLQAECDQYRS
ILAETEGMLRDLQKSVEEEEQVWRKAVGAAEEELQKSRVTVKHLEEIVEKLKGELESDDQVREHTSHLEA
ELEKHMMAAASAEQNYAKEVAGLRQLLLESQSQLDAAKSEAQKQSDDELALVRQQLSEMKSHVEDGDIAGA
PASSPEAPPAEQDPVQLKTQLEWTEAILEDQEQRQKLTAEFEEAQT SACRLQEELEKLRTAGPLESSET
EEASQLKERLEKEKLLTSDLGRAATRLQELLKTTQEQLEAREKDTVKKLQEQLEKAEDGSSSKEGTSV

TRTRPLEQKLI SEEDLAANDILDYKDDDDKV

Tag:	C-Myc/DDK
Purity:	> 80% as determined by SDS-PAGE and Coomassie blue staining
Concentration:	>0.05 µg/µL as determined by microplate BCA method
Labeling Method:	Labeled with [U- ¹³ C ₆ , ¹⁵ N ₄]-L-Arginine and [U- ¹³ C ₆ , ¹⁵ N ₂]-L-Lysine
Buffer:	25 mM Tris-HCl, 100 mM glycine, pH 7.3
Storage:	Store at -80°C. Avoid repeated freeze-thaw cycles.
Stability:	Stable for 3 months from receipt of products under proper storage and handling conditions.



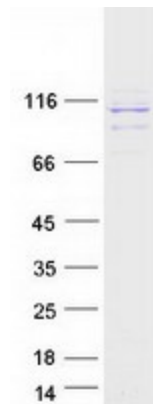
[View online »](#)

RefSeq:	NP_001036041
RefSeq Size:	3792
RefSeq ORF:	2931
Synonyms:	ES/130; ES130; hES; p180; RRp
Locus ID:	6238
UniProt ID:	Q9P2E9
Cytogenetics:	20p12.1

Summary: This gene encodes a ribosome-binding protein of the endoplasmic reticulum (ER) membrane. Studies suggest that this gene plays a role in ER proliferation, secretory pathways and secretory cell differentiation, and mediation of ER-microtubule interactions. Alternative splicing has been observed and protein isoforms are characterized by regions of N-terminal decapeptide and C-terminal heptad repeats. Splicing of the tandem repeats results in variations in ribosome-binding affinity and secretory function. The full-length nature of variants which differ in repeat length has not been determined. Pseudogenes of this gene have been identified on chromosomes 3 and 7, and RRBP1 has been excluded as a candidate gene in the cause of Alagille syndrome, the result of a mutation in a nearby gene on chromosome 20p12. [provided by RefSeq, Apr 2012]

Protein Families: Druggable Genome, Transmembrane

Product images:



Coomassie blue staining of purified RRBP1 protein (Cat# [TP318816]). The protein was produced from HEK293T cells transfected with RRBP1 cDNA clone (Cat# [RC218816]) using MegaTran 2.0 (Cat# [TT210002]).