

## Product datasheet for PH318815

### Integrin alpha 9 (ITGA9) (NM\_002207) Human Mass Spec Standard

#### Product data:

Product Type:	Mass Spec Standards
Description:	ITGA9 MS Standard C13 and N15-labeled recombinant protein (NP_002198)
Species:	Human
Expression Host:	HEK293
Expression cDNA Clone or AA Sequence:	RC218815
Predicted MW:	114.52 kDa
Protein Sequence:	>RC218815 representing NM_002207 Red=Cloning site Green=Tags(s)

MGGPAAPRGAGRLRALLLALVVAGIPAGAYNLDPQRPVHFQGPADSFFGYAVLEHFHDNTRWLVGAPKA  
DSKYSPSVKSPGAVFKCRVHTNPDRRCTELDMARGKNRGTSCGKTCREDRDEWMGVSLARQPKADGRVL  
ACAHRWKNIIYYEADHILPHGFCYIIPSNLQAKGRTLIPCYEYKKKYGEEHGSCQAGIAGFFTEELVVMG  
APGSFYWAGTIKVLNLTDNTYLKLNDEVIMNRRYTYLGYAVTAGHFSHPSTIDVVGAPQDKGIGKYYIF  
RADRRSGTLIKIFQASGKMGSYFGSSLCAVDLNGDGLSDLLVGAPMFSEIRDEGQVTVYINRNGALEE  
QLALTGDGAYNAHFGESIASLDDLNDGFPDVAIGAPKEDDFAGAVYIYHGDASGIVPQYSMKLSGQKIN  
PVLRMFGQSI SGGIDMDGNGYDPDVTGAFMSDSVLLRARPVITVDVSIIFLPGSINITAPQCHDGGQPVN  
CLNVTTCFSFHGKHVPGEI GLNYVLMADVAKKEKGQMPRVYFVLLGETMGQVTEKLQLTYMEETCRHYVA  
HVKRRVQDVISPIVFEAAYSLSEHVTGEEERELPPLTPVLRWKKGQKIAQKNQTVFERNCRESDCAADLQ  
LQGLLLLSSMDEKTLYLALGAVKNISLNISSNLGDDAYDANVSFNVSRELFFINMWQKEEMGISCELLE  
SDFLKCSVGFPMRSKSKYEFVIFDTSLSHGEEVLSFIVTAQSGNTERSESLHDNTLVMVPLMHEVD  
TSITGIMSPTSFVYGESVDAANFIQLDDLECHFQPINITLQVYNTGPSTLPGSSVSI SFPNRLSSGGAEM  
FHVQEMVVGQEKGNCSFQKNPTPCIIPQEENIFHTIFAFFTKSGRVLDCPKGISCLTAHCNFSALAK  
EESRTIDIYMLLNTIILKDDSSVIQFMSRAKVKVDPALRVVEIAHGNPEEVTVVFEALHNLPRGYVVG  
WIIAISLLVGILIFLLLAVLLWKMGGFRRRYKEIEAEKNRKENEDSWDWWQKNQ

TRTRPLEQKLI SEEDLAANDILDYKDDDDKV

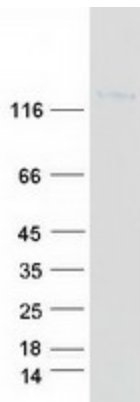
Tag:	C-Myc/DDK
Purity:	> 80% as determined by SDS-PAGE and Coomassie blue staining
Concentration:	>0.05 µg/µL as determined by microplate BCA method
Labeling Method:	Labeled with [U- <sup>13</sup> C <sub>6</sub> , <sup>15</sup> N <sub>4</sub> ]-L-Arginine and [U- <sup>13</sup> C <sub>6</sub> , <sup>15</sup> N <sub>2</sub> ]-L-Lysine
Buffer:	25 mM Tris-HCl, 100 mM glycine, pH 7.3
Storage:	Store at -80°C. Avoid repeated freeze-thaw cycles.



[View online »](#)

<b>Stability:</b>	Stable for 3 months from receipt of products under proper storage and handling conditions.
<b>RefSeq:</b>	<a href="#">NP_002198</a>
<b>RefSeq Size:</b>	3962
<b>RefSeq ORF:</b>	3105
<b>Synonyms:</b>	ALPHA-RLC; ITGA4L; RLC
<b>Locus ID:</b>	3680
<b>UniProt ID:</b>	<a href="#">Q13797</a> , <a href="#">Q8N6H6</a>
<b>Cytogenetics:</b>	3p22.2
<b>Summary:</b>	This gene encodes an alpha integrin. Integrins are heterodimeric integral membrane glycoproteins composed of an alpha chain and a beta chain that mediate cell-cell and cell-matrix adhesion. The protein encoded by this gene, when bound to the beta 1 chain, forms an integrin that is a receptor for VCAM1, cytotactin and osteopontin. Expression of this gene has been found to be upregulated in small cell lung cancers. [provided by RefSeq, Jul 2008]
<b>Protein Families:</b>	Druggable Genome, Transmembrane
<b>Protein Pathways:</b>	Arrhythmogenic right ventricular cardiomyopathy (ARVC), Cell adhesion molecules (CAMs), Dilated cardiomyopathy, ECM-receptor interaction, Focal adhesion, Hypertrophic cardiomyopathy (HCM), Regulation of actin cytoskeleton

### Product images:



Coomassie blue staining of purified ITGA9 protein (Cat# [TP318815]). The protein was produced from HEK293T cells transfected with ITGA9 cDNA clone (Cat# [RC218815]) using MegaTran 2.0 (Cat# [TT210002]).