

Product datasheet for PH318798

ARHGEF7 (NM_145735) Human Mass Spec Standard

Product data:

Product Type:	Mass Spec Standards
Description:	ARHGEF7 MS Standard C13 and N15-labeled recombinant protein (NP_663788)
Species:	Human
Expression Host:	HEK293
Expression cDNA Clone or AA Sequence:	RC218798
Predicted MW:	87.6 kDa
Protein Sequence:	>RC218798 representing NM_145735 Red=Cloning site Green=Tags(s)

MNSAEQTVTWLITLGVLESPKKTISDPEGFLQASLKDGVVLCRLLERLLPGTIEKVYPEPRSESECLSNIREFLRGCGASLRLETFDANDLYQGQNFNKVLSLVTLNKVTADIGLSDSVCARPSSHRIKSFDSLGSQSLHTRTSKLFQGGYRSLDMTNSNQLVVRKAFNFQQTNEDELSFSGGDVIVHTRVEEGGWEGTLNGRTGWFPSNYVREVKASEKPVSPKSGTLKSPKGFDTTAINKSYYNVVLQNILETENEYSKELQTVLSTYLRLPQTSEKLSANISYLMGNLEEICSFQQMLVQSLEECTKLEPAQQRVGGCFLNLMQMKTLYLTYCANHPSAVNVL TEHSEELGEFMETKGASSPILVLTGLSKPFMRLDKYPTLLKELERHMEDYHTDRQDIQKSMAAFKNLSAQCEVRKRKELELQILTEAIRNWEQDDIKTLGNVTYMSQVLIQCAGSEEKNERYLLLFPNVLLMLSASPRMSGFIYQKLPPTGMTITKLEDSENHRNAFEISGSMIERILVSCNNQQDLQEWVEHLQKQTKVTSVGNPTIKPHSVPSHTLP SHPVTSPSKHADSKPAPLTPAYHTLPHPSHHGTPHTTINWGPLEPPKTPKPWSLSCLRPAAPLRPSAALCYKEDLSKSPKTMKLLPKRKPERKPSDEEFASRKSTAAL EEDAQILKVI EAYC TSAKTRQTLNSTWQGTDLMHNHVLADDDQPSLDSLGRSSLSRLEPSDLS ESDSDYDSIWT AHSYRMGSTS RKSCCSYISHQN

TRTRPLEQKLI SEEDLAANDILDYKDDDDKV

Tag:	C-Myc/DDK
Purity:	> 80% as determined by SDS-PAGE and Coomassie blue staining
Concentration:	>0.05 µg/µL as determined by microplate BCA method
Labeling Method:	Labeled with [U- ¹³ C ₆ , ¹⁵ N ₄]-L-Arginine and [U- ¹³ C ₆ , ¹⁵ N ₂]-L-Lysine
Buffer:	25 mM Tris-HCl, 100 mM glycine, pH 7.3
Storage:	Store at -80°C. Avoid repeated freeze-thaw cycles.
Stability:	Stable for 3 months from receipt of products under proper storage and handling conditions.
RefSeq:	NP_663788



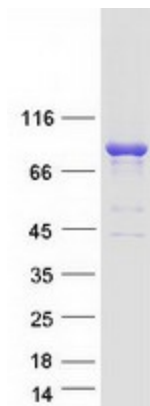
[View online >](#)

RefSeq Size:	5304
RefSeq ORF:	2346
Synonyms:	BETA-PIX; COOL-1; COOL1; Nbla10314; P50; P50BP; P85; P85COOL1; P85SPR; PAK3; PIXB
Locus ID:	8874
UniProt ID:	Q14155 , Q5W9H1
Cytogenetics:	13q34

Summary: This gene encodes a protein that belongs to a family of cytoplasmic proteins that activate the Ras-like family of Rho proteins by exchanging bound GDP for GTP. It forms a complex with the small GTP binding protein Rac1 and recruits Rac1 to membrane ruffles and to focal adhesions. Multiple alternatively spliced transcript variants encoding different isoforms have been observed for this gene. [provided by RefSeq, Mar 2016]

Protein Pathways: Regulation of actin cytoskeleton

Product images:



Coomassie blue staining of purified ARHGEF7 protein (Cat# [TP318798]). The protein was produced from HEK293T cells transfected with ARHGEF7 cDNA clone (Cat# [RC218798]) using MegaTran 2.0 (Cat# [TT210002]).