

Product datasheet for PH318796

Kinesin 5C (KIF5C) (NM_004522) Human Mass Spec Standard

Product data:

Product Type:	Mass Spec Standards
Description:	KIF5C MS Standard C13 and N15-labeled recombinant protein (NP_004513)
Species:	Human
Expression Host:	HEK293
Expression cDNA Clone or AA Sequence:	RC218796
Predicted MW:	109.3 kDa
Protein Sequence:	>RC218796 representing NM_004522 Red=Cloning site Green=Tags(s)

MADPAECSIKVMCRFRPLNEAEILRGDKFIPKFKGDET VVIGQGKPYVDFRVLPPNTTQE QVYNACAKQI
VKDVL EGYNGTIFAYGQTSSGKTHMEGKLHDPQLMGIIPRIAHDFDHIYSMDENLEFH IKVSYFEIYL
DKIRDLLDVSKTNLAVHEDKNRPVYVKGCTERFVSSPEEVM DVIDEGKANRHVAVTNMNEHSSRSHSIFL
INIKQENVETEKLSGKLYLVDLAGSEKVSKTGAEGAVLDEAKNINKLSALGNVISALAEGTKTHVPYR
DSKMTRILQDSLGGNCRTTIVICCSPSVFNEAETKSTLMFGQRAKTIKNTVSVNLELTAEWKKKYEKEK
EKNKTLKNVIQHLEMLNRWRNGEAVPEDEQISAKDQKNLEPCDNTPIIDNIAPVVAGISTEEKEKYDEE
ISSLYRQLDDKDEINQSQSLAEK LKQQMLDQDELLASTRRDYEKIQEELTRLQIENEA AKDEVKEVLQA
LEELAVNYDQKSQEVEDKTRANEQLTDELAQKTTTLTTTQRELSQLQELSNHQKRATEILNLLKDLGE
IGGIIGTNDVKTLADVNGVIEEEFTMARLYISMKMSEVKS LVNRSKQLES AQMDSNRKMNASEREL AACQ
LLISQHEAKIKSLTDYMQNMEQKRRQLEESQDSLSEELAKLRAQEK MHEVSFQDKEKEHLTRLQDAEEMK
KALEQQMESHREAHQKQLSRLRDEIEEKQKIIDEIRD LNQKLQLEQEKLS SDYNKLIKIEDQEREMKLEKL
LLLNDKREQAREDLKGLEETVSRELQTLHNL RKL FVQDL TTRVKKSVELDNDDGGGSA AQKQKISFLENN
LEQLTKVHKQLVRDNADLRCEL PKLEKRLRATAERVKAL ESALKEAKENAMRDRKRYQQEVDRIKEAVRA
KNMARRAHSAQIAKPIRPGHYPASSPTAVHAIRGGGSSSNSTHYQK

TRTRPLEQKLI SEEDLAANDILDYKDDDDKV

Tag:	C-Myc/DDK
Purity:	> 80% as determined by SDS-PAGE and Coomassie blue staining
Concentration:	>0.05 µg/µL as determined by microplate BCA method
Labeling Method:	Labeled with [U- ¹³ C ₆ , ¹⁵ N ₄]-L-Arginine and [U- ¹³ C ₆ , ¹⁵ N ₂]-L-Lysine
Buffer:	25 mM Tris-HCl, 100 mM glycine, pH 7.3
Storage:	Store at -80°C. Avoid repeated freeze-thaw cycles.
Stability:	Stable for 3 months from receipt of products under proper storage and handling conditions.



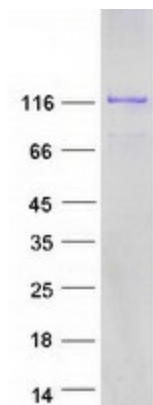
[View online »](#)

RefSeq: [NP_004513](#)
RefSeq Size: 6927
RefSeq ORF: 2871
Synonyms: CDCBM2; KINN; NKHC; NKHC-2; NKHC2
Locus ID: 3800
UniProt ID: [O60282](#), [Q59GB8](#)
Cytogenetics: 2q23.1-q23.2

Summary: The protein encoded by this gene is a kinesin heavy chain subunit involved in the transport of cargo within the central nervous system. The encoded protein, which acts as a tetramer by associating with another heavy chain and two light chains, interacts with protein kinase CK2. Mutations in this gene have been associated with complex cortical dysplasia with other brain malformations-2. Two transcript variants, one protein-coding and the other non-protein coding, have been found for this gene. [provided by RefSeq, Jul 2015]

Protein Families: Druggable Genome

Product images:



Coomassie blue staining of purified KIF5C protein (Cat# [TP318796]). The protein was produced from HEK293T cells transfected with KIF5C cDNA clone (Cat# [RC218796]) using MegaTran 2.0 (Cat# [TT210002]).