

Product datasheet for PH318763

TFIIE alpha (GTF2E1) (NM_005513) Human Mass Spec Standard

Product data:

Product Type:	Mass Spec Standards
Description:	GTF2E1 MS Standard C13 and N15-labeled recombinant protein (NP_005504)
Species:	Human
Expression Host:	HEK293
Expression cDNA Clone or AA Sequence:	RC218763
Predicted MW:	49.3 kDa
Protein Sequence:	>RC218763 representing NM_005513 Red=Cloning site Green=Tags(s)

MADPDVLTEVPAALKRLAKYVIRGFYGIEHALALDILIRNSCVKEEDMLELLKFDRKQLRSVLNLLKGDK
FIKCRMRVETAADGKTTRHNYFINYRTLNVVVKYKLDHMRRIETDERDSTNRASFKCPVCSSTFTDLE
ANQLFDPMTGTFRCTFCHEVEEDESAMPKKDARTLLARFNEQIEPIYALLRETEDVNLAYEILEPEPTE
IPALKQSKDHAATTAGAASLAGGHHREAWATKGPSYEDLYTQNVVINMDDQEDLHRASLEGKSAKERPIW
LRETVQAGYGSSEDMKEGGIDMDAFQEREEGHAGPDDNEEVMRALLIHEKKTSSAMAGSVGAAAPVTAAN
GDDSESETSESDDDSPRPAAVAVHKREEDEEEDDEFEEVADDPIMVAGRPFYSYSEVSQRPELVAQMTP
EEKEAYIAMGQRMFEDLFE

TRTRPLEQKLISEEDLAANDILDYKDDDDKV

Tag:	C-Myc/DDK
Purity:	> 80% as determined by SDS-PAGE and Coomassie blue staining
Concentration:	>0.05 µg/µL as determined by microplate BCA method
Labeling Method:	Labeled with [U- ¹³ C ₆ , ¹⁵ N ₄]-L-Arginine and [U- ¹³ C ₆ , ¹⁵ N ₂]-L-Lysine
Buffer:	25 mM Tris-HCl, 100 mM glycine, pH 7.3
Storage:	Store at -80°C. Avoid repeated freeze-thaw cycles.
Stability:	Stable for 3 months from receipt of products under proper storage and handling conditions.
RefSeq:	<u>NP_005504</u>
RefSeq Size:	2969
RefSeq ORF:	1317
Synonyms:	FE; TF2E1; TFIIE-A



[View online »](#)

Locus ID: 2960

UniProt ID: [P29083](#)

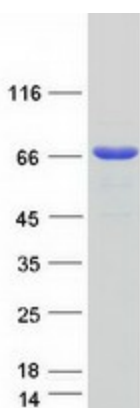
Cytogenetics: 3q13.33

Summary: Recruits TFIIH to the initiation complex and stimulates the RNA polymerase II C-terminal domain kinase and DNA-dependent ATPase activities of TFIIH. Both TFIIH and TFIIE are required for promoter clearance by RNA polymerase.[UniProtKB/Swiss-Prot Function]

Protein Families: Transcription Factors

Protein Pathways: Basal transcription factors

Product images:



Coomassie blue staining of purified GTF2E1 protein (Cat# [TP318763]). The protein was produced from HEK293T cells transfected with GTF2E1 cDNA clone (Cat# [RC218763]) using MegaTran 2.0 (Cat# [TT210002]).