

Product datasheet for PH318730

Phospholipase A2 (PLB1) (NM_153021) Human Mass Spec Standard

Product data:

Product Type:	Mass Spec Standards
Description:	PLB1 MS Standard C13 and N15-labeled recombinant protein (NP_694566)
Species:	Human
Expression Host:	HEK293
Expression cDNA Clone or AA Sequence:	RC218730
Predicted MW:	162.9 kDa
Protein Sequence:	>RC218730 representing NM_153021 Red=Cloning site Green=Tags(s)

MGLRPGIFLLELLLLLGGQTPQIHTSPRKSTLEGQLWPETLKNSPFCNPNKLGVMSPKSVHSLKPSDI
KFVAAIGNLEIPDPDGTGDLKQDWTERPQQVCMGVMVLSDIIRYFSPSVPMPVCHTGKRVIPHDGAED
LWIIQAQELVRNMKENLQDFQFDWKLINVFFSNASQCYLCPAQNGLAAGGVDELGMVLDYLLQEQVPR
FVNLVDLSEVAEVSRYHGTWLSAPEPCNCSEETTRLAKVVMQWSYQEAWSLLASSRYSEQESFTVVF
QPFFYETTPSLHSEDPRLDSTTLAWHLWNRMMEPAGEKDEPLSVKHGRPMKCPSQESPYLFSYRNSNYL
TRLQKPDKLEVREGAERICPKDPSDTVPTSVHRLKPADINVIGALGDSL TAGNGAGSTPGNVDLVTQ
YRGLSWSVGGDENIGTVTTLANILREFNPSLKGFSVGTGKETSPNAFLNQAVAGGRAEDLPVQARRLVDL
MKNDTRIHFQEDWKIITLFIGGNDLCDFCNLDVHYSQNFQDNIGKALDILHAEVPRAFVNLVTVLEIVN
LRELYQEKKVYCPRMILRSLCPCVLKFDNSTELATLIEFNKFKQEKTHQLIESGRYDTREDFTVVQVQPF
FENVMPKTSEGLPDNSFFAPDCFHSSKSHSRAASALWNNMLEPVGQKTRRHKFENKINITCPNQVQPF
LRTYKNSMQGHGTWLPDRDRAPSALHPTSVHALRPADIQVVAALGDSL TAGNGIGSKPDDLDPDVTQYRG
LSYSAGGDGSLNVTTLPNILREFNRNL TGYAVGTGDANDTNAFLNQAVPGAKAEDLMSQVQTLQMKMD
DHRVNFHEDWKIVITVLIGGSDLCDYCTDSNLYSAANFVDHLRNALDVLHREVPRVNLVDFLNPTIMRQ
VFLGNPDKCPVQQASVLCNCVLTRENSQELARLEAFSRAVYRSMREL VGSGRYDQEDFSVVLQPFQFN
IQLPVLADGLPDTFFFAPDCIHPNQKFHSQLARALWTNMLEPLGSKTETLDLRAEMPICTQNEPFLRT
PRNSNYTIKPAIENWGSDFLCTEWKASNSVPTSVHQLRPADIKVVAALGDSL TTAGVARPNNSSDLPT
SWRGLSWSIGGDGNLETHHTLPNILLKFNPLYLLGFSTSTWEGTAGLNVAEAGARARDMPAQAWDLVERMK
NSPDINLEKDWKLVTLFIGVNDLCHYCENPEAHLATEYVQHIQQALDILSEELPRAFVNVVEVMELASLY
QQGGKCAMLAAQNCTCLRHSQSSLEKQELKKVWNLQHGISSFSYWHQYTRQEDFAVVVQPFQNTLT
PLNERGDTDLTFFSEDCFHSDRGHAEMAIALWNNMLEPVGRKTSNNFTHSRAKLCPSPEPYLYTLR
NSRLLPDQAAEAEVLYWAVPVAAGVGLVVGIIIGTVVWRCRRGGRRDPPMSLRTVAL

TRTRPLEQKLI SEEDLAANDILDYKDDDDKV

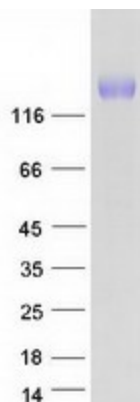
Tag:	C-Myc/DDK
Purity:	> 80% as determined by SDS-PAGE and Coomassie blue staining



[View online >](#)

Concentration:	>0.05 µg/µL as determined by microplate BCA method
Labeling Method:	Labeled with [U- ¹³ C ₆ , ¹⁵ N ₄]-L-Arginine and [U- ¹³ C ₆ , ¹⁵ N ₂]-L-Lysine
Buffer:	25 mM Tris-HCl, 100 mM glycine, pH 7.3
Storage:	Store at -80°C. Avoid repeated freeze-thaw cycles.
Stability:	Stable for 3 months from receipt of products under proper storage and handling conditions.
RefSeq:	NP_694566
RefSeq Size:	5063
RefSeq ORF:	4374
Synonyms:	PLB; PLB/LIP
Locus ID:	151056
UniProt ID:	Q6P1J6 , B2RWP8
Cytogenetics:	2p23.2
Summary:	This gene encodes a membrane-associated phospholipase that displays lysophospholipase and phospholipase A2 activities through removal of sn-1 and sn-2 fatty acids of glycerophospholipids. In addition, it displays lipase and retinyl ester hydrolase activities. The encoded protein is highly conserved and is composed of a large, glycosylated extracellular domain composed of four tandem homologous domains, followed by a hydrophobic segment that anchors the enzyme to the membrane and a short C-terminal cytoplasmic tail. This gene has been identified as a candidate rheumatoid arthritis risk gene. [provided by RefSeq, Jul 2016]
Protein Families:	Transmembrane

Product images:



Coomassie blue staining of purified PLB1 protein (Cat# [TP318730]). The protein was produced from HEK293T cells transfected with PLB1 cDNA clone (Cat# [RC218730]) using MegaTran 2.0 (Cat# [TT210002]).