

## Product datasheet for PH318704

### Collagen VI (COL6A2) (NM\_058174) Human Mass Spec Standard

#### Product data:

Product Type:	Mass Spec Standards
Description:	COL6A2 MS Standard C13 and N15-labeled recombinant protein (NP_478054)
Species:	Human
Expression Host:	HEK293
Expression cDNA Clone or AA Sequence:	RC218704
Predicted MW:	95.3 kDa
Protein Sequence:	>RC218704 representing NM_058174 Red=Cloning site Green=Tags(s)

MLQGTCSVLLWGLGAIQAQQQEVISPDTTERRNNCPEKTDTCPIHVYFVLDTSESVTMQSPTDILLFHM  
KQFVPPQFISQLQNEFYLDQVALSWRYGGLHFSQVVEVFSPPGSDRASFIKNLQGISFRRGTFTDCALAN  
MTEQIRQDRSKGTVHFVAVITDGHVTGSPCGIKLQAERAREEGIRLFAVAPNQNLKEQGLRDIASPTHE  
LYRNDYATMLPDSTEINQDTINRIIKVMKHEAYGECYKVSCLIPGSPGPKGYRGQKGAKNMGEPGEPG  
QKGRQGDPIEGPIGFPGPKGVPGFKGEKGEFGADGRKGAPLAGKNGTDGQKGLGRIGPPGCKGDPGN  
RGPDPGYPGEAGSPGERGDQGGKGDPRGRRGPPGEIGAKGSKGYQNGGAPGSPGVKGAAGGPGPRGPK  
GEPGRRGDPGKSPGSDGPKGEKGDPEGPRGLAGEVGNKGAKGDRGLPGPRGPQALGEPGKQGSRG  
DPGDAGPRGDSGQPGKGDPRPGFSYPGPRGAPGEKGEPRGPEGGRGDFGLKGEPRGKGEKGEPADP  
GPPGEPGPRGPRGVPGEPEGPGDPGLTECDVMTYVRETCGCCDCEKRCGALDVVFVIDSSESIYTN  
FTLEKNFVINVVNRLGAIKDPKSETGTRVGVVQYSHEGTFEAIQLDDEHIDSLSSFKEAVKNLEWIAGG  
TWTPSALKFAYDRLIKESRRQKTRVAVITDGRHDPDDDLNLRALCDRDVTVTAIGIGDMFHEKHESE  
NLYSIACDKPQQVRNMTLFSDLVAEKFIIDMEDVLCPPDQIVCPDLPCQTDAPWPGGEPVTFRLRTEEGP  
DATFPRTIPLIQQLLNATELTQDPAAYSQLVAVLVYTAERAKFATGVERQDWMELFIDTFKLVHRDIVGD  
PETALALC

SGP<sup>TRRRLEQKLI</sup>SEEDLAANDILDYKDDDDKV

Tag:	C-Myc/DDK
Purity:	> 80% as determined by SDS-PAGE and Coomassie blue staining
Concentration:	>0.05 µg/µL as determined by microplate BCA method
Labeling Method:	Labeled with [U- <sup>13</sup> C <sub>6</sub> , <sup>15</sup> N <sub>4</sub> ]-L-Arginine and [U- <sup>13</sup> C <sub>6</sub> , <sup>15</sup> N <sub>2</sub> ]-L-Lysine
Buffer:	25 mM Tris-HCl, 100 mM glycine, pH 7.3
Storage:	Store at -80°C. Avoid repeated freeze-thaw cycles.
Stability:	Stable for 3 months from receipt of products under proper storage and handling conditions.



[View online >](#)

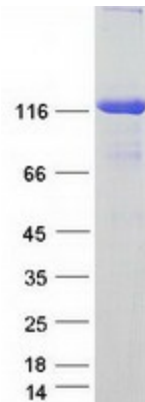
RefSeq:	<a href="#">NP_478054</a>
RefSeq Size:	3145
RefSeq ORF:	2754
Synonyms:	BTHLM1; PP3610; UCMD1
Locus ID:	1292
UniProt ID:	<a href="#">P12110</a>
Cytogenetics:	21q22.3

**Summary:** This gene encodes one of the three alpha chains of type VI collagen, a beaded filament collagen found in most connective tissues. The product of this gene contains several domains similar to von Willebrand Factor type A domains. These domains have been shown to bind extracellular matrix proteins, an interaction that explains the importance of this collagen in organizing matrix components. Mutations in this gene are associated with Bethlem myopathy and Ullrich scleroatonic muscular dystrophy. Three transcript variants have been identified for this gene. [provided by RefSeq, Jul 2008]

**Protein Families:** Secreted Protein

**Protein Pathways:** ECM-receptor interaction, Focal adhesion

### Product images:



Coomassie blue staining of purified COL6A2 protein (Cat# [TP318704]). The protein was produced from HEK293T cells transfected with COL6A2 cDNA clone (Cat# [RC218704]) using MegaTran 2.0 (Cat# [TT210002]).