

Product datasheet for PH318682

TRAF3 (NM_003300) Human Mass Spec Standard

Product data:

Product Type:	Mass Spec Standards
Description:	TRAF3 MS Standard C13 and N15-labeled recombinant protein (NP_003291)
Species:	Human
Expression Host:	HEK293
Expression cDNA Clone or AA Sequence:	RC218682
Predicted MW:	64.5 kDa
Protein Sequence:	>RC218682 protein sequence Red=Cloning site Green=Tags(s)

MESSKKMDSPGALQTNPPLKLHTDRSAGTPVFPVEQGGYKEKFKVKTVEDKYKCEKCHLVLCSPKQTECGH
RFCESCMAALLSSSSPKCTACQESIVKDKVFKDNCCKREILALQIYCRNESRGCAEQMLGHLVHLKND
CHFEELPCVRPDKCEKVLKDLRDHVEKACKYREATCSHCKSQVPMIALQKHEDTDCPCVVVSCPHKCSV
QTLRSEL SAHLSECVNAPSTCSFKRYGCVFQGTNQQIKAHEASSAVQHVNLLKEWSNSLEKKVSLLLQNE
SVEKNKSIQSLHNQICSFIEIERQKEMLRNNEISKILHLQRVIDSQAELKELDKAIRPFRQNWEADSM
KSSVESLQNRVTELESVDKSAGQVARNTGLLESQLSRHDQMLSVHDIRLADMDLRFQVLETASYNGVLIW
KIRDYKRRKQEAVMGKTL SLYSQPFYTYGYFKYKMCARVYLNGDGMGKGTHLSLFFVIMRGEYDALLPWWF
KQKVTLMLMDQSSRRHLGDAFKPDPNSSFFKPTGEMNIASGCPVFAQTVLENGTYIKDDTIFIKVIV
DTSDLDPD

TRTRPLEQKLI SEEDLAANDILDYKDDDDKV

Tag:	C-Myc/DDK
Purity:	> 80% as determined by SDS-PAGE and Coomassie blue staining
Concentration:	>0.05 µg/µL as determined by microplate BCA method
Labeling Method:	Labeled with [U- 13C6, 15N4]-L-Arginine and [U- 13C6, 15N2]-L-Lysine
Buffer:	25 mM Tris-HCl, 100 mM glycine, pH 7.3
Storage:	Store at -80°C. Avoid repeated freeze-thaw cycles.
Stability:	Stable for 3 months from receipt of products under proper storage and handling conditions.
RefSeq:	<u>NP_003291</u>
RefSeq Size:	7654
RefSeq ORF:	1704



[View online »](#)

Synonyms: CAP-1; CAP1; CD40bp; CRAF1; IIAE5; LAP1; RNF118

Locus ID: 7187

UniProt ID: [Q13114](#)

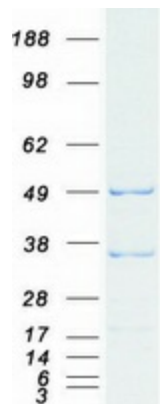
Cytogenetics: 14q32.32

Summary: The protein encoded by this gene is a member of the TNF receptor associated factor (TRAF) protein family. TRAF proteins associate with, and mediate the signal transduction from, members of the TNF receptor (TNFR) superfamily. This protein participates in the signal transduction of CD40, a TNFR family member important for the activation of the immune response. This protein is found to be a critical component of the lymphotoxin-beta receptor (LTbetaR) signaling complex, which induces NF-kappaB activation and cell death initiated by LTbeta ligation. Epstein-Barr virus encoded latent infection membrane protein-1 (LMP1) can interact with this and several other members of the TRAF family, which may be essential for the oncogenic effects of LMP1. The protein also plays a role in the regulation of antiviral response. Mutations in this are associated with Encephalopathy, acute, infection-induced, herpes-specific 5. [provided by RefSeq, Jul 2020]

Protein Families: Druggable Genome

Protein Pathways: Pathways in cancer, RIG-I-like receptor signaling pathway, Small cell lung cancer, Toll-like receptor signaling pathway

Product images:



Coomassie blue staining of purified TRAF3 protein (Cat# [TP318682]). The protein was produced from HEK293T cells transfected with TRAF3 cDNA clone (Cat# [RC218682]) using MegaTran 2.0 (Cat# [TT210002]).