

Product datasheet for PH318647

Kallikrein 6 (KLK6) (NM_002774) Human Mass Spec Standard

Product data:

Product Type:	Mass Spec Standards
Description:	KLK6 MS Standard C13 and N15-labeled recombinant protein (NP_002765)
Species:	Human
Expression Host:	HEK293
Expression cDNA Clone or AA Sequence:	RC218647
Predicted MW:	26.86 kDa
Protein Sequence:	>RC218647 representing NM_002774 Red =Cloning site Green =Tags(s) MKKLMVVLSLIAAAWAEEQNKL VHGGPCDKT SHPYQAAL YTSGHLLCGGVLIHPLWVLTAAHCKKPNLQV FLGKHNL RQRESSQE QSSVVRV IHPDYDAASHDQDIMLLRLARPAKLS ELIQPLPLERDCSANTTSCHI LGWGKTADGDFPDTIQCAYIHLVSREECEHAYPGQITQNM L CAGDEKYGKDSCQGDGGPLVCGDHLRGL VSWGNI PCGSKEKPGVYTNVCRYTNWIQKTIQAK TR TRPLEQKLI SEEDLAANDILDYKDDDDKV
Tag:	C-Myc/DDK
Purity:	> 80% as determined by SDS-PAGE and Coomassie blue staining
Concentration:	>0.05 µg/µL as determined by microplate BCA method
Labeling Method:	Labeled with [U- ¹³ C ₆ , ¹⁵ N ₄]-L-Arginine and [U- ¹³ C ₆ , ¹⁵ N ₂]-L-Lysine
Buffer:	25 mM Tris-HCl, 100 mM glycine, pH 7.3
Storage:	Store at -80°C. Avoid repeated freeze-thaw cycles.
Stability:	Stable for 3 months from receipt of products under proper storage and handling conditions.
RefSeq:	NP_002765
RefSeq Size:	1527
RefSeq ORF:	732
Synonyms:	Bssp; hK6; Klk7; PRSS9; PRSS18; SP59
Locus ID:	5653
UniProt ID:	Q92876 , A0A024R4J8



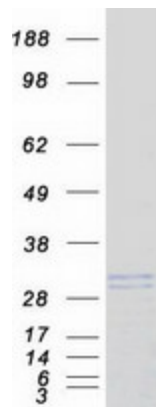
[View online »](#)

Cytogenetics: 19q13.41

Summary: This gene encodes a member of the kallikrein subfamily of the peptidase S1 family of serine proteases. Growing evidence suggests that many kallikreins are implicated in carcinogenesis and some have potential as novel cancer and other disease biomarkers. The encoded preproprotein is proteolytically processed to generate the mature protease. Expression of this protease is regulated by steroid hormones and may be elevated in multiple human cancers and in serum from psoriasis patients. The encoded protease may participate in the cleavage of amyloid precursor protein and alpha-synuclein, thus implicating this protease in Alzheimer's and Parkinson's disease, respectively. This gene is located in a gene cluster on chromosome 19. Alternative splicing results in multiple transcript variants, at least one of which encodes an isoform that is proteolytically processed. [provided by RefSeq, Feb 2016]

Protein Families: Druggable Genome, Protease, Secreted Protein

Product images:



Coomassie blue staining of purified KLK6 protein (Cat# [TP318647]). The protein was produced from HEK293T cells transfected with KLK6 cDNA clone (Cat# [RC218647]) using MegaTran 2.0 (Cat# [TT210002]).