

## Product datasheet for PH318598

### ENTPD8 (NM\_001033113) Human Mass Spec Standard

#### Product data:

Product Type:	Mass Spec Standards
Description:	ENTPD8 MS Standard C13 and N15-labeled recombinant protein (NP_001028285)
Species:	Human
Expression Host:	HEK293
Expression cDNA Clone or AA Sequence:	RC218598
Predicted MW:	53.7 kDa
Protein Sequence:	>RC218598 representing NM_001033113 Red=Cloning site Green=Tags(s)

MGLSRKEQVFLALLGASGVSLTALILLVEATSVLLPTDIKFGIVFDAGSSHTSLFLYQWLANKENGTG  
VVSQALACQVEGPGISSYTSNAAQAGESLQGCLEELVLIPEAQHRKTPFLGATAGMRLLSRKNSQAR  
DIFAAVTQVLGRSPVDFWGAELLAGQAEGAFGWITVNYLGLTLVKYSFTGEWIQPPEMLVGALDMGGAS  
TQITFVPGGPILDKSTQADFRLYGSDYSVYTHSYLCFGRDQMLSRLLVGLVQSRPAALLRHPCYLSGYQT  
TLALGPLYESPCVHATPPLSLPQNLVTEGTGNPGACVSAIRELFNFSSCQGQEDCAFQDGVYQPPLRGQFY  
AFSNFYTFHFLNLSRQPLSTVNATIWEFCQRPWKLVEASYPGQDRWLRDYCASGLYIILTLLHEGYGFS  
EETWPSLEFRKQAGGVDIGWTLGYMLNLTGMIPADAPAQWRAESYGVVWAKVVMVLALVAVVGAALVQL  
FWLQD

TRTRPLEQKLISEEDLAANDILDYKDDDDKV

Tag:	C-Myc/DDK
Purity:	> 80% as determined by SDS-PAGE and Coomassie blue staining
Concentration:	>0.05 µg/µL as determined by microplate BCA method
Labeling Method:	Labeled with [U- 13C6, 15N4]-L-Arginine and [U- 13C6, 15N2]-L-Lysine
Buffer:	25 mM Tris-HCl, 100 mM glycine, pH 7.3
Storage:	Store at -80°C. Avoid repeated freeze-thaw cycles.
Stability:	Stable for 3 months from receipt of products under proper storage and handling conditions.
RefSeq:	<a href="#">NP_001028285</a>
RefSeq Size:	2222
RefSeq ORF:	1485



[View online »](#)

**Synonyms:** E-NTPDase; GLSR2492; NTPDase-8; UNQ2492

**Locus ID:** 377841

**UniProt ID:** [Q5MY95](#)

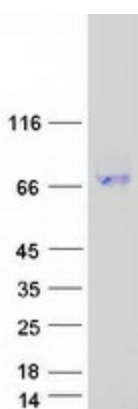
**Cytogenetics:** 9q34.3

**Summary:** Canalicular ectonucleoside NTPDase responsible for the main hepatic NTPDase activity. Ectonucleoside NTPDases catalyze the hydrolysis of gamma- and beta-phosphate residues of nucleotides, playing a central role in concentration of extracellular nucleotides. Has activity toward ATP, ADP, UTP and UDP, but not toward AMP.[UniProtKB/Swiss-Prot Function]

**Protein Families:** Transmembrane

**Protein Pathways:** Purine metabolism, Pyrimidine metabolism

### Product images:



Coomassie blue staining of purified ENTPD8 protein (Cat# [TP318598]). The protein was produced from HEK293T cells transfected with ENTPD8 cDNA clone (Cat# [RC218598]) using MegaTran 2.0 (Cat# [TT210002]).