

Product datasheet for PH318581

IL3RB (CSF2RB) (NM_000395) Human Mass Spec Standard

Product data:

Product Type:	Mass Spec Standards
Description:	CSF2RB MS Standard C13 and N15-labeled recombinant protein (NP_000386)
Species:	Human
Expression Host:	HEK293
Expression cDNA Clone or AA Sequence:	RC218581
Predicted MW:	97.34 kDa
Protein Sequence:	>RC218581 representing NM_000395 Red=Cloning site Green=Tags(s)

MVLAQGLLSMALLALCWERSLAGAETIPLQTLRCYNDYTSHTCRWADTQDAQRLVNVTLIRRVNEDLL
EPVSCDLSDMPWSACPHPRCVPRRCVIPCQSFVVTVDVDFSFQPDRLGTRLTVTLTQHVPPEPRDLQ
ISTDQDHFLLTWSVALGSPQSHWLSPGDLEFEVYKRLQDSWEDAAILLNNTSQATLGPEHLMPSSTYVA
RVRTRLAPGSRLSGRPSKWSPEVCWDSQPGDEAQPQNLECFDGAAVLSCSWEVRKEVASSVSFGLFYKP
SPDAGEEECSVPLREGLGSLHTRHHCQIPVDPATHGQYIVSVQPRRAEKHIKSSVNIQMAPPSLNVTKD
GDSYSLRWETMKMRYEHIDHTFEIQYRKDTATWKDSKTE TLQNAHSMALPALEPSTRYWARVVRTSRTG
YNGIWSEWSEARSWDTESVLP MWVLALIVIFLTIIVLLALRFCGIYGYRLRRKWEKIPNPSKSHLFQNG
SAELWPPGMSAFTSGSPPHQGPWGSRFPELEGVFPVGFVGDSEVSPLTIEDPKHVCDDPPSGPDTPAASD
LPTEQPPSPQPGPPAASHTEKQASSDFNGPYLGPHSRSLPDILGQPEPPQEGGSQKSPPPGSLEYLC
LPAGGQVQLVPLAQAMGPGQAVEVERRPSQGAAGSPSLESGGGPAPPALGPRVGGQDQKDSVVAIPMSSG
DTEDPGVASGYVSSADLVFTPNSSGASSVSLVPSLGLPSDQTPSLCPGLASGPPGAPGPVKSGFEGYVELP
PIEGRSPRSPRNPVPEAKSPVLNPGERPADVSPSPQPEGLLVLQQVGDYCFPLPGLGPGPLSLRSKPS
SPGPGPEIKNLDQAFQVKKPPGQAVPQVPVIQLFKALKQQDYLSLPPWEVKNKPGVC

TRTRPLEQKLI SEEDLAANDILDYKDDDDKV

Tag:	C-Myc/DDK
Purity:	> 80% as determined by SDS-PAGE and Coomassie blue staining
Concentration:	>0.05 µg/µL as determined by microplate BCA method
Labeling Method:	Labeled with [U- ¹³ C ₆ , ¹⁵ N ₄]-L-Arginine and [U- ¹³ C ₆ , ¹⁵ N ₂]-L-Lysine
Buffer:	25 mM Tris-HCl, 100 mM glycine, pH 7.3
Storage:	Store at -80°C. Avoid repeated freeze-thaw cycles.
Stability:	Stable for 3 months from receipt of products under proper storage and handling conditions.



[View online »](#)

RefSeq: [NP_000386](#)

RefSeq Size: 2996

RefSeq ORF: 2691

Synonyms: betaGMR; CD131; CDw131; IL3RB; IL5RB; SMDP5

Locus ID: 1439

UniProt ID: [P32927](#), [Q6NSJ8](#)

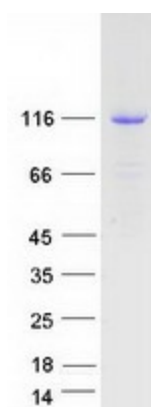
Cytogenetics: 22q12.3

Summary: The protein encoded by this gene is the common beta chain of the high affinity receptor for IL-3, IL-5 and CSF. Defects in this gene have been reported to be associated with protein alveolar proteinosis (PAP). [provided by RefSeq, Jul 2008]

Protein Families: Druggable Genome, Transmembrane

Protein Pathways: Apoptosis, Cytokine-cytokine receptor interaction, Jak-STAT signaling pathway

Product images:



Coomassie blue staining of purified CSF2RB protein (Cat# [TP318581]). The protein was produced from HEK293T cells transfected with CSF2RB cDNA clone (Cat# [RC218581]) using MegaTran 2.0 (Cat# [TT210002]).