

## Product datasheet for PH318556

### PDZD6 (INTU) (NM\_015693) Human Mass Spec Standard

#### Product data:

Product Type:	Mass Spec Standards
Description:	INTU MS Standard C13 and N15-labeled recombinant protein (NP_056508)
Species:	Human
Expression Host:	HEK293
Expression cDNA Clone or AA Sequence:	RC218556
Predicted MW:	105.5 kDa
Protein Sequence:	>RC218556 representing NM_015693 Red=Cloning site Green=Tags(s)

MASVASCDSRPSSDELPGDPSSQEEDEDYDFEDRVSDSGSYSSASSDYDDLEPEWLDSPVQKNGELFYLEL  
SEDEEESLLPETPTVNHVRFSENEIIEDDYKERKKYEPKPKQFTKILRRKRLPKRCNKKNSNDNGPVS  
ILKHQSNQKTGVIQQRYKDVNVVYVNPVKLVIKAKEQLKLEVLVGIHQTKWSWRRTGKQGDGERLVV  
HGLLPGGSAMKSGQVLIGDVLVAVNDVDVTTENIERVLSVIPGPMQVKLTFENAYDVKRETSHPRQKKTQ  
SNTSDLVKLLWGEEVEGIQQSGLNTPHIIMYLTLQLDSETSKEEQEILYHYPMSEASQKLSVRGIFLTL  
CDMLENVGTQVTSSLLLLNGKQIHVAYWKESDKLLLIGLPAEEVPLPRLRNMIENVIQTLKFMYGSLDS  
AFCQIENVPRLDHFFNLFFQRALQPAKLHSSASPSAQQYDASSAVLLDNLPGVRWLTLPLEIKMELDMAL  
SDLEAADFAELSEDYDMRRLYITLGSSELYKGYLICSHLPKDDLIDIAVYCRHYCLLPLAAKQRIGQLI  
IWREVFPOHHLRPLADSSTEVFPEPEGRYFLLVVGKHYMLCVLLEAGGASKAIGSPGDCVYVDQVKT  
TLHQLDGVDSDRIDERLASSVPCLSCADWFLTGSREKTDLSLTTSPILSRLQGTSKVATSPTCRRTLFGDY  
SLKTRKPSPCSSGGSDNGCEGGEDDGFSPHTTPDAVRKQRESQSGDGLLEESGTLKVTKKKSTLNPFFH  
LGNLKKDLPEKELEIYNTVKLTSGPENTLFHYVALETVQGIFITPTLEEVAQLSGSIHPQLIKNFHQCL  
SIRAVFQQTLVEEKKKGLNSGDHSDSAKSVSSLNPVKEHGVLFECSPGNWTDQKKAPPVMAYVWVGRFL  
HPKPQELVYCFHDSVTEIAIEIAFKLFFGLTL

TRTRPLEQKLISEEDLAANDILDYKDDDDKV

Tag:	C-Myc/DDK
Purity:	> 80% as determined by SDS-PAGE and Coomassie blue staining
Concentration:	>0.05 µg/µL as determined by microplate BCA method
Labeling Method:	Labeled with [U- <sup>13</sup> C <sub>6</sub> , <sup>15</sup> N <sub>4</sub> ]-L-Arginine and [U- <sup>13</sup> C <sub>6</sub> , <sup>15</sup> N <sub>2</sub> ]-L-Lysine
Buffer:	25 mM Tris-HCl, 100 mM glycine, pH 7.3
Storage:	Store at -80°C. Avoid repeated freeze-thaw cycles.
Stability:	Stable for 3 months from receipt of products under proper storage and handling conditions.



[View online »](#)

RefSeq: [NP\\_056508](#)

RefSeq Size: 3238

RefSeq ORF: 2826

Synonyms: CPLANE4; INT; OFD17; PDZD6; PDZK6; SRTD20

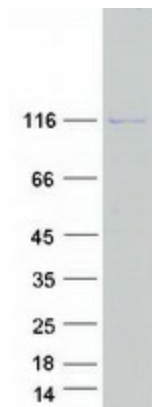
Locus ID: 27152

UniProt ID: [Q9ULD6](#)

Cytogenetics: 4q28.1

**Summary:** Plays a key role in ciliogenesis and embryonic development. Regulator of cilia formation by controlling the organization of the apical actin cytoskeleton and the positioning of the basal bodies at the apical cell surface, which in turn is essential for the normal orientation of elongating ciliary microtubules. Plays a key role in definition of cell polarity via its role in ciliogenesis but not via conversion extension. Has an indirect effect on hedgehog signaling (By similarity). Proposed to function as core component of the CPLANE (ciliogenesis and planar polarity effectors) complex involved in the recruitment of peripheral IFT-A proteins to basal bodies (PubMed:27158779).[UniProtKB/Swiss-Prot Function]

### Product images:



Coomassie blue staining of purified INTU protein (Cat# [TP318556]). The protein was produced from HEK293T cells transfected with INTU cDNA clone (Cat# [RC218556]) using MegaTran 2.0 (Cat# [TT210002]).