

Product datasheet for PH318532

PSORS1C1 (NM_014068) Human Mass Spec Standard

Product data:

Product Type:	Mass Spec Standards
Description:	PSORS1C1 MS Standard C13 and N15-labeled recombinant protein (NP_054787)
Species:	Human
Expression Host:	HEK293
Expression cDNA Clone or AA Sequence:	RC218532
Predicted MW:	16.4 kDa
Protein Sequence:	>RC218532 representing NM_014068 Red =Cloning site Green =Tags(s) MTCTDQKSHSQRALGTQTPALQGPQLLNTDPSSEETRPVHPVNDRLCHMEPANHFHWAGDLQAMISKEFH LAATQDDCRKGRGTQEDILVPSSHPPELFAVLPMAPEEAARLQQPQPLPPPSGIHLSASRTLAPTLLYSSP PSHSPFGLSSLI TR TRPLEQ KL I SEED LA AND I LDYK DDDD KV
Tag:	C-Myc/DDK
Purity:	> 80% as determined by SDS-PAGE and Coomassie blue staining
Concentration:	>0.05 µg/µL as determined by microplate BCA method
Labeling Method:	Labeled with [U- ¹³ C ₆ , ¹⁵ N ₄]-L-Arginine and [U- ¹³ C ₆ , ¹⁵ N ₂]-L-Lysine
Buffer:	25 mM Tris-HCl, 100 mM glycine, pH 7.3
Storage:	Store at -80°C. Avoid repeated freeze-thaw cycles.
Stability:	Stable for 3 months from receipt of products under proper storage and handling conditions.
RefSeq:	NP_054787
RefSeq Size:	861
RefSeq ORF:	456
Synonyms:	C6orf16; SEEK1
Locus ID:	170679
UniProt ID:	Q9UIG5 , D2IYL0

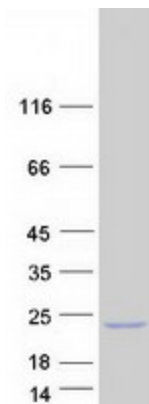


[View online »](#)

Cytogenetics: 6p21.33

Summary: This gene is one of several genes thought to confer susceptibility to psoriasis and systemic sclerosis, located on chromosome 6 near the major histocompatibility complex (MHC) class I region. [provided by RefSeq, Sep 2011]

Product images:



Coomassie blue staining of purified PSORS1C1 protein (Cat# [TP318532]). The protein was produced from HEK293T cells transfected with PSORS1C1 cDNA clone (Cat# [RC218532]) using MegaTran 2.0 (Cat# [TT210002]).