

## Product datasheet for PH318473

### TEM8 (ANTXR1) (NM\_053034) Human Mass Spec Standard

#### Product data:

Product Type:	Mass Spec Standards
Description:	ANTXR1 MS Standard C13 and N15-labeled recombinant protein (NP_444262)
Species:	Human
Expression Host:	HEK293
Expression cDNA Clone or AA Sequence:	RC218473
Predicted MW:	38.3 kDa
Protein Sequence:	>RC218473 representing NM_053034 Red=Cloning site Green=Tags(s)

MATAERRALGIGFQWLSLATLVLICAGQGRRREDGGPACYGGFDLYFILDKSGSVLHHWNEIYYFVEQLA  
HKFISPLRMSFIVFSTRGTTLMKLTEDREQIRQGLEELQKVLPGDGYMHEGFERASEQIYYENRQGYR  
TASVIIALTDGELHEDLFFYSEREANRSRDLGAIYVCVGVKDFNETQLARIADSKDHVFPVNDGFQALQG  
IIHSILKKSCIEILAAEPSTICAGESFQVVVRGNGFRHARNVDRVLCSEKINDSVTLNEKPFVSDTYLL  
CPAPILKEVGMKAALQVSMNDGLSFISSSVIITTHCSDGSILAIALLILFLLLALALLWWFWPLCCTVI  
IKEVPPPPAAESEEENKIK

TRTRPLEQKLI SEEDLAANDILDYKDDDDKV

Tag:	C-Myc/DDK
Purity:	> 80% as determined by SDS-PAGE and Coomassie blue staining
Concentration:	>0.05 µg/µL as determined by microplate BCA method
Labeling Method:	Labeled with [U- <sup>13</sup> C <sub>6</sub> , <sup>15</sup> N <sub>4</sub> ]-L-Arginine and [U- <sup>13</sup> C <sub>6</sub> , <sup>15</sup> N <sub>2</sub> ]-L-Lysine
Buffer:	25 mM Tris-HCl, 100 mM glycine, pH 7.3
Storage:	Store at -80°C. Avoid repeated freeze-thaw cycles.
Stability:	Stable for 3 months from receipt of products under proper storage and handling conditions.
RefSeq:	<a href="#">NP_444262</a>
RefSeq Size:	1454
RefSeq ORF:	1104
Synonyms:	ATR; GAPO; TEM8
Locus ID:	84168



[View online »](#)

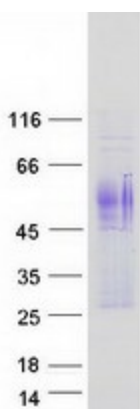
UniProt ID: [Q9H6X2](#)

Cytogenetics: 2p13.3

**Summary:** This gene encodes a type I transmembrane protein and is a tumor-specific endothelial marker that has been implicated in colorectal cancer. The encoded protein has been shown to also be a docking protein or receptor for Bacillus anthracis toxin, the causative agent of the disease, anthrax. The binding of the protective antigen (PA) component, of the tripartite anthrax toxin, to this receptor protein mediates delivery of toxin components to the cytosol of cells. Once inside the cell, the other two components of anthrax toxin, edema factor (EF) and lethal factor (LF) disrupt normal cellular processes. Three alternatively spliced variants that encode different protein isoforms have been described. [provided by RefSeq, Oct 2008]

**Protein Families:** Druggable Genome, Transmembrane

### Product images:



Coomassie blue staining of purified ANTXR1 protein (Cat# [TP318473]). The protein was produced from HEK293T cells transfected with ANTXR1 cDNA clone (Cat# [RC218473]) using MegaTran 2.0 (Cat# [TT210002]).