

Product datasheet for PH318468

DDI2 (NM_032341) Human Mass Spec Standard

Product data:

Product Type:	Mass Spec Standards
Description:	DDI2 MS Standard C13 and N15-labeled recombinant protein (NP_115717)
Species:	Human
Expression Host:	HEK293
Expression cDNA Clone or AA Sequence:	RC218468
Predicted MW:	44.3 kDa
Protein Sequence:	>RC218468 representing NM_032341 Red=Cloning site Green=Tags(s) MLLTVYCVRRDLSEVTFSLQVDADFELHNFRLCELESGIPAAESQIVYAERPLTDNHRSLASYGLKDGD VVILRQKENADPRPPVQFPNLPRIDFSSIAVPGTSSPRQRPPGTQQSHSSPGEITSSPQGLDNPALLRD MLLANPHELSELLKERNPPLAEALLSGDLEKFSRVLVEQQQDRARREQERIRLFSADPFDLEAQAKIEEDI RQQNIEENMTIAMEEAPESFGQVVMLYINCKVNGHPVKAQFVDSGAQMTIMSQACAERCNIMRLVDRRWAG IAKGVGTQKIIGRVHLAQVQIEGDFLPCFSFISILEEQPMDMLLGLDMLKRHQCSIDLKKNVLVIGTTGSQT TFLPEGELPECARLAYGAGREDVRPEEIADQELAEALQKSAEDAERQKP TRTRPLEQKLI SEEDLAANDILDYKDDDDKV
Tag:	C-Myc/DDK
Purity:	> 80% as determined by SDS-PAGE and Coomassie blue staining
Concentration:	>0.05 µg/µL as determined by microplate BCA method
Labeling Method:	Labeled with [U- ¹³ C ₆ , ¹⁵ N ₄]-L-Arginine and [U- ¹³ C ₆ , ¹⁵ N ₂]-L-Lysine
Buffer:	25 mM Tris-HCl, 100 mM glycine, pH 7.3
Storage:	Store at -80°C. Avoid repeated freeze-thaw cycles.
Stability:	Stable for 3 months from receipt of products under proper storage and handling conditions.
RefSeq:	<u>NP_115717</u>
RefSeq Size:	1759
RefSeq ORF:	1197
Locus ID:	84301
UniProt ID:	<u>Q5TDH0</u>



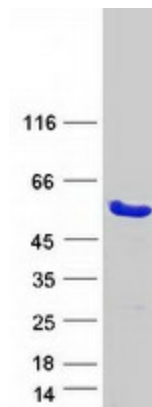
[View online »](#)

Cytogenetics: 1p36.21

Summary: Aspartic protease that mediates the cleavage of NFE2L1/NRF1 at 'Leu-104', thereby promoting release of NFE2L1/NRF1 from the endoplasmic reticulum membrane (PubMed:27676298, PubMed:27528193). Ubiquitination of NFE2L1/NRF1 is a prerequisite for cleavage, suggesting that DDI2 specifically recognizes and binds ubiquitinated NFE2L1/NRF1 (PubMed:27528193). Seems to act as a proteasomal shuttle which links the proteasome and replication fork proteins like RTF2 (Probable). Required, with DDI1, for cellular survival following replication stress. Together or redundantly with DDI1, removes RTF2 from stalled forks to allow cell cycle progression after replication stress and maintains genome integrity (PubMed:29290612). [UniProtKB/Swiss-Prot Function]

Protein Families: Druggable Genome

Product images:



Coomassie blue staining of purified DDI2 protein (Cat# [TP318468]). The protein was produced from HEK293T cells transfected with DDI2 cDNA clone (Cat# [RC218468]) using MegaTran 2.0 (Cat# [TT210002]).