

Product datasheet for PH318438

REC114 (NM_001042367) Human Mass Spec Standard

Product data:

| | |
|---------------------------------------|---|
| Product Type: | Mass Spec Standards |
| Description: | C15orf60 MS Standard C13 and N15-labeled recombinant protein (NP_001035826) |
| Species: | Human |
| Expression Host: | HEK293 |
| Expression cDNA Clone or AA Sequence: | RC218438 |
| Predicted MW: | 29 kDa |
| Protein Sequence: | >RC218438 representing NM_001042367 Red=Cloning site Green=Tags(s) MAEAGKVPLSLGLTGGEAAEWPLQRYARCIPSNTRDPPGPCLEAGTAPCPTWKVFDSEESGYLVLTIVI SGHFFIFQGQTLLEGFSLIGSKDWLKIIVRRVDCLLFGTTIKDKSRLFRVQFSGESKEQALEHCCSCVQKL AQYITVQVPDGNIQELQLIPGPPRATESQKDSAKSVPRQPGSHQHSEQQVCVTAGTGAPDGRSLTQL AQTLLASEELPHYVEQSAWGAEEELGPFLRLCLMDQNFPAPFVEEVEKELKKLAGLRN SGPTRRRLEQKLISEEDLAANDILDYKDDDDKV |
| Tag: | C-Myc/DDK |
| Purity: | > 80% as determined by SDS-PAGE and Coomassie blue staining |
| Concentration: | >0.05 µg/µL as determined by microplate BCA method |
| Labeling Method: | Labeled with [U- ¹³ C ₆ , ¹⁵ N ₄]-L-Arginine and [U- ¹³ C ₆ , ¹⁵ N ₂]-L-Lysine |
| Buffer: | 25 mM Tris-HCl, 100 mM glycine, pH 7.3 |
| Storage: | Store at -80°C. Avoid repeated freeze-thaw cycles. |
| Stability: | Stable for 3 months from receipt of products under proper storage and handling conditions. |
| RefSeq: | NP_001035826 |
| RefSeq Size: | 938 |
| RefSeq ORF: | 798 |
| Synonyms: | C15orf60; CT147; OOMD10 |
| Locus ID: | 283677 |
| UniProt ID: | Q7Z4M0 |

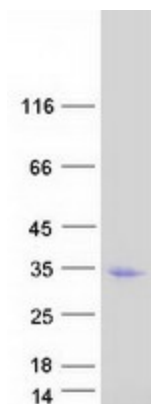


[View online »](#)

Cytogenetics: 15q24.1

Summary: The protein encoded by this gene is orthologous to the mouse meiotic recombination protein REC114, which is involved in DNA double-strand break formation during meiosis. The encoded protein is conserved in most eukaryotes and was first discovered and characterized in yeast. [provided by RefSeq, Feb 2017]

Product images:



Coomassie blue staining of purified REC114 protein (Cat# [TP318438]). The protein was produced from HEK293T cells transfected with REC114 cDNA clone (Cat# [RC218438]) using MegaTran 2.0 (Cat# [TT210002]).