

Product datasheet for PH318427

Decorin (DCN) (NM_133506) Human Mass Spec Standard

Product data:

Product Type:	Mass Spec Standards
Description:	DCN MS Standard C13 and N15-labeled recombinant protein (NP_598013)
Species:	Human
Expression Host:	HEK293
Expression cDNA Clone or AA Sequence:	RC218427
Predicted MW:	17.4 kDa
Protein Sequence:	RC218427
Tag:	C-Myc/DDK
Purity:	> 80% as determined by SDS-PAGE and Coomassie blue staining
Concentration:	>0.05 µg/µL as determined by microplate BCA method
Labeling Method:	Labeled with [U- ¹³ C ₆ , ¹⁵ N ₄]-L-Arginine and [U- ¹³ C ₆ , ¹⁵ N ₂]-L-Lysine
Buffer:	25 mM Tris-HCl, 100 mM glycine, pH 7.3
Storage:	Store at -80°C. Avoid repeated freeze-thaw cycles.
Stability:	Stable for 3 months from receipt of products under proper storage and handling conditions.
RefSeq:	NP_598013
RefSeq Size:	1336
RefSeq ORF:	516
Synonyms:	CSCD; DSPG2; PG40; PGII; PGS2; SLRR1B
Locus ID:	1634
UniProt ID:	P07585 , Q6FH10
Cytogenetics:	12q21.33



[View online »](#)

Summary:

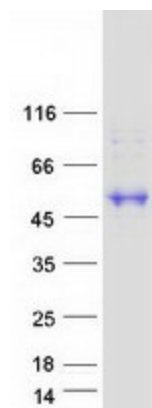
This gene encodes a member of the small leucine-rich proteoglycan family of proteins. Alternative splicing results in multiple transcript variants, at least one of which encodes a preproprotein that is proteolytically processed to generate the mature protein. This protein plays a role in collagen fibril assembly. Binding of this protein to multiple cell surface receptors mediates its role in tumor suppression, including a stimulatory effect on autophagy and inflammation and an inhibitory effect on angiogenesis and tumorigenesis. This gene and the related gene biglycan are thought to be the result of a gene duplication. Mutations in this gene are associated with congenital stromal corneal dystrophy in human patients. [provided by RefSeq, Nov 2015]

Protein Families:

Druggable Genome, Secreted Protein

Protein Pathways:

TGF-beta signaling pathway

Product images:

Coomassie blue staining of purified DCN protein (Cat# [TP318427]). The protein was produced from HEK293T cells transfected with DCN cDNA clone (Cat# [RC218427]) using MegaTran 2.0 (Cat# [TT210002]).