

Product datasheet for PH318418

SNRPC (NM_003093) Human Mass Spec Standard

Product data:

Product Type:	Mass Spec Standards
Description:	SNRPC MS Standard C13 and N15-labeled recombinant protein (NP_003084)
Species:	Human
Expression Host:	HEK293
Expression cDNA Clone or AA Sequence:	RC218418
Predicted MW:	17.2 kDa
Protein Sequence:	>RC218418 representing NM_003093 Red=Cloning site Green=Tags(s) MPKFYCDYCDTYLTHDPSVRKTHCSGRKHKENVKDYQKWMEEQAQSLIDKTTAAFQQGKIPPTPFSAP PPAGAMIPPPSLPGPPRPGMMPAPHMGGPPMMPMPPPPGMPVGPAPGMRPPMGGHMPMPPGPPMMR PPARPMMPVTRPGMTRPDR TRTRPLEQKLI SEEDLAANDILDYKDDDDKV
Tag:	C-Myc/DDK
Purity:	> 80% as determined by SDS-PAGE and Coomassie blue staining
Concentration:	>0.05 µg/µL as determined by microplate BCA method
Labeling Method:	Labeled with [U- 13C6, 15N4]-L-Arginine and [U- 13C6, 15N2]-L-Lysine
Buffer:	25 mM Tris-HCl, 100 mM glycine, pH 7.3
Storage:	Store at -80°C. Avoid repeated freeze-thaw cycles.
Stability:	Stable for 3 months from receipt of products under proper storage and handling conditions.
RefSeq:	<u>NP_003084</u>
RefSeq Size:	733
RefSeq ORF:	477
Synonyms:	U1C; Yhc1
Locus ID:	6631
UniProt ID:	<u>P09234, Q5TAL4</u>



[View online »](#)

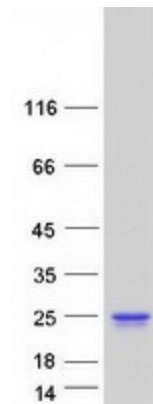
Cytogenetics: 6p21.31

Summary: This gene encodes one of the specific protein components of the U1 small nuclear ribonucleoprotein (snRNP) particle required for the formation of the spliceosome. The encoded protein participates in the processing of nuclear precursor messenger RNA splicing. snRNP particles are attacked by autoantibodies frequently produced by patients with connective tissue diseases. The genome contains several pseudogenes of this functional gene. Alternative splicing results in a non-coding transcript variant.[provided by RefSeq, Oct 2009]

Protein Families: Stem cell - Pluripotency

Protein Pathways: Spliceosome

Product images:



Coomassie blue staining of purified SNRPC protein (Cat# [TP318418]). The protein was produced from HEK293T cells transfected with SNRPC cDNA clone (Cat# [RC218418]) using MegaTran 2.0 (Cat# [TT210002]).