

Product datasheet for PH318395

CMTM7 (NM_181472) Human Mass Spec Standard

Product data:

Product Type:	Mass Spec Standards
Description:	CMTM7 MS Standard C13 and N15-labeled recombinant protein (NP_852137)
Species:	Human
Expression Host:	HEK293
Expression cDNA Clone or AA Sequence:	RC218395
Predicted MW:	15.3 kDa
Protein Sequence:	>RC218395 representing NM_181472 Red=Cloning site Green=Tags(s) MSHGAGLVRTTCSSGSALGPGAGAAQPSASPLEGLLDLSYPRTHAALLKVAQMVTLIIAFICVRSSLWTN YSAYSIFEVVTICDLIMILAFYLVHLFRFYRVLTCISWPLSIFGFMATFLCMASIWLSYKISCVTQSTDA AV TRTRPLEQKLISEEDLAANDILDYKDDDDKV
Tag:	C-Myc/DDK
Purity:	> 80% as determined by SDS-PAGE and Coomassie blue staining
Concentration:	>0.05 µg/µL as determined by microplate BCA method
Labeling Method:	Labeled with [U- 13C6, 15N4]-L-Arginine and [U- 13C6, 15N2]-L-Lysine
Buffer:	25 mM Tris-HCl, 100 mM glycine, pH 7.3
Storage:	Store at -80°C. Avoid repeated freeze-thaw cycles.
Stability:	Stable for 3 months from receipt of products under proper storage and handling conditions.
RefSeq:	NP_852137
RefSeq Size:	1270
RefSeq ORF:	426
Synonyms:	CKLFSF7
Locus ID:	112616
UniProt ID:	Q96FZ5



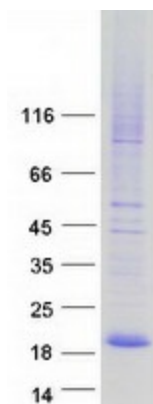
[View online »](#)

Cytogenetics: 3p22.3

Summary: This gene belongs to the chemokine-like factor gene superfamily, a novel family that is similar to the chemokine and transmembrane 4 superfamilies. This gene is one of several chemokine-like factor genes located in a cluster on chromosome 3. This gene acts as a tumor suppressor that regulates G1/S transition in the cell cycle, and epidermal growth factor receptor/protein kinase B signaling during tumor pathogenesis. Alternative splicing results in multiple transcript variants encoding different isoforms. [provided by RefSeq, Feb 2016]

Protein Families: Transmembrane

Product images:



Coomassie blue staining of purified CMTM7 protein (Cat# [TP318395]). The protein was produced from HEK293T cells transfected with CMTM7 cDNA clone (Cat# [RC218395]) using MegaTran 2.0 (Cat# [TT210002]).