

Product datasheet for PH318384

SCYL1 (NM_001048218) Human Mass Spec Standard

Product data:

Product Type:	Mass Spec Standards
Description:	SCYL1 MS Standard C13 and N15-labeled recombinant protein (NP_001041683)
Species:	Human
Expression Host:	HEK293
Expression cDNA Clone or AA Sequence:	RC218384
Predicted MW:	87.9 kDa
Protein Sequence:	>RC218384 representing NM_001048218 Red=Cloning site Green=Tags(s)

MWFFARDPVRDFPFELIPEPPEGGLPGPWALHRGRKKATGSPVSI FVYDVKPGAEEQTQVAKAAFKRFT
LRHPNILAYIDGLETEKCLHVVTEAVTPLGIYLKARVEAGGLKELEISWGLHQIVKALSFLVNDCSLIHN
NVCMAAVFVDRAGEWKLGLDYMYS AQNGGGPPRKGIPLEQYDPPELADSSGRVVREKWSADMWRLGC
LIWEVFNGLPRAAALRNPGKIPKTLVPHYCEL VGANPKVVRPNARFLQNCRAPGGFMSNRFVETNLFLE
EIQIKEPAEKQKFFQELSKSLDAFPEDFCRHKVLQLLTAF EFGNAGAVL TPLFKVGFLSAE EYQQKI
IPVVVKMFSSTDRAMRIRLLQQMEQFIQYLDEPTVNTQIFPHVHGF LDTNPAIREQTVKSMLLLAPKLN
EANLNVELMKHFARLQAKDEQGP IRCNTTVCLGKIGSYLSASTRHRVLTSAFSRATRDPFAPS RVAGVLG
FAATHNLYSMNDCAQKILPVLCGLTVDPEKSVRDQAFKAIRSFLSKLESVSEDPTQLEEEVEKDVHAASSP
GMGGAAASWAGWAVTGVSSLTSKLIRSHPTTAPTETNIPQRPTPEGHWETQEEDKDTAEDSSTADRWDE
DWGSLEQEAESVLAQQDDWSTGGQVSRASQVSNSDHKSSKSPESDWSSWEAEGSWEQGWQEPSSQEP PPPD
GTRLASEYNWGGPESSDKGDPFATLSARPSTQPRPDSWGEDNWEGLETD SRQVKAELARKKREERRREME
AKRAERKVAKGPMKLGARKLD

TRTRPLEQKLI SEEDLAANDILDYKDDDDKV

Tag:	C-Myc/DDK
Purity:	> 80% as determined by SDS-PAGE and Coomassie blue staining
Concentration:	>0.05 µg/µL as determined by microplate BCA method
Labeling Method:	Labeled with [U- ¹³ C ₆ , ¹⁵ N ₄]-L-Arginine and [U- ¹³ C ₆ , ¹⁵ N ₂]-L-Lysine
Buffer:	25 mM Tris-HCl, 100 mM glycine, pH 7.3
Storage:	Store at -80°C. Avoid repeated freeze-thaw cycles.
Stability:	Stable for 3 months from receipt of products under proper storage and handling conditions.
RefSeq:	NP_001041683



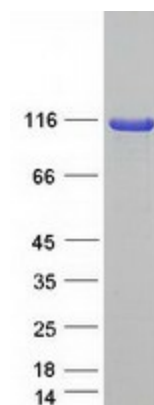
[View online >](#)

RefSeq Size:	2616
RefSeq ORF:	2373
Synonyms:	GKLP; HT019; NKTL; NTKL; P105; SCAR21; TAPK; TEIF; TRAP
Locus ID:	57410
UniProt ID:	Q96KG9
Cytogenetics:	11q13.1

Summary: This gene encodes a transcriptional regulator belonging to the SCYL1-like family of kinase-like proteins. The protein has a divergent N-terminal kinase domain that is thought to be catalytically inactive, and can bind specific DNA sequences through its C-terminal domain. It activates transcription of the telomerase reverse transcriptase and DNA polymerase beta genes. The protein has been localized to the nucleus, and also to the cytoplasm and centrosomes during mitosis. Multiple transcript variants encoding different isoforms have been found for this gene. [provided by RefSeq, Jul 2008]

Protein Families: Druggable Genome, Protein Kinase

Product images:



Coomassie blue staining of purified SCYL1 protein (Cat# [TP318384]). The protein was produced from HEK293T cells transfected with SCYL1 cDNA clone (Cat# [RC218384]) using MegaTran 2.0 (Cat# [TT210002]).