

Product datasheet for PH318368

GUCY2D (NM_000180) Human Mass Spec Standard

Product data:

Product Type:	Mass Spec Standards
Description:	GUCY2D MS Standard C13 and N15-labeled recombinant protein (NP_000171)
Species:	Human
Expression Host:	HEK293
Expression cDNA Clone or AA Sequence:	RC218368
Predicted MW:	119.9 kDa
Protein Sequence:	>RC218368 representing NM_000180 Red=Cloning site Green=Tags(s)

MTACARRAGGLPDPGLCGPAWWAPSLPRLPRALPRLPLLLLLLLLQPPALSAVFTVGVLPWACDPIFSR
ARPDLAARLAAARLNRDPGLAGGPRFEVALLPEPCRTPGSLGAVSSALARVSGLVGPVNPAAACRPAELLA
EEAGIALVPWGPCWTQAEGTTAPAVTPAADALYALLRAFGWARVALVTAPQDLWVEAGRSLSTALRARGL
PVASVTSMEPLDLSGAREALRKVRDGPRTAVIMVMHVSLLGGEEQRYLLEAAEELGLTDGSLVFLPFDI
IHYALSPGPEALAAANSSQLRRAHDAVLTTRHCPSEGSVLDLRRRAQERRELPDNLQVSPFLFGTI
YDAVFLARGVAEAAAAGGRWVSGAAVARHIRDAQVPGFCGDLGGDEEPPFVLLDADAAGDRFLFATYML
DPARGSFSLSAGTRMHFPRGGSAPGPDPCWFDPNNICGGGLEPGLVFLGFLLVGMGLAGAFLAHYVRHR
LLHMQMVSQPNKIILTVDDITFLHPHGGTSRKVAQGSRSLSGARSMSDIRSGPSQHLDSPNIGVYEGDRV
WLKKFPGDQHIAIRPATKTAFAFKLQELRHENVALYLGLFLARGAEGPAALWEGNLAVVSEHCTRGLQDL
LAQREIKLDWMFKSLLLDLIKIRYLHHRGVAHGRLKSRNCIVDGRFVLKITDGHGRLLAQAQVLP
PRAEDQLWTAPPELLRDPALERRGTLAGDVFSLAIIIMQEVVCRSAPYAMLELTPEEVVQVRSPPLCRPL
VSMDQAPVEICILLMKQCWAEQPELRPSMDHTFDLFDKINIKGRKTNIIIDSMRLMLEYSSNLEDLIRERTE
ELELEKQKTDRLLTQMLPPSVAEALKTGTPVEPEYFEQVTLYFSDIVGFTTISAMSEPIEVVDLLNDLYT
LFDALIGSHDVYKVVETIGDAYMVASGLPQRNGQRHAAEIANMSLDILSAVGTFRMRHMPEVPVIRIRIGLH
SGPCVAGVVGLTMPRYCLFGDTVNTASRMESTGLPYRIHVNLSVIGILRALDSGYVELRGRTTELKKGGA
EDTFWLVGRRGFNKPIPKPPDLQPGSSNHGISLQEIIPERRRRKLEKARPGQFS

TRTRPLEQKLI SEEDLAANDILDYKDDDDKV

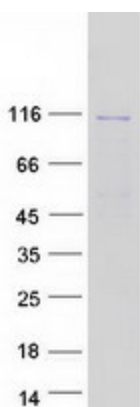
Tag:	C-Myc/DDK
Purity:	> 80% as determined by SDS-PAGE and Coomassie blue staining
Concentration:	>0.05 µg/µL as determined by microplate BCA method
Labeling Method:	Labeled with [U- ¹³ C ₆ , ¹⁵ N ₄]-L-Arginine and [U- ¹³ C ₆ , ¹⁵ N ₂]-L-Lysine
Buffer:	25 mM Tris-HCl, 100 mM glycine, pH 7.3



[View online »](#)

Storage:	Store at -80°C. Avoid repeated freeze-thaw cycles.
Stability:	Stable for 3 months from receipt of products under proper storage and handling conditions.
RefSeq:	NP_000171
RefSeq Size:	3621
RefSeq ORF:	3309
Synonyms:	CACD1; CG-E; CORD5; CORD6; CSNB1I; CYGD; GUC1A4; GUC2D; LCA; LCA1; RCD2; retGC; RETGC-1; ROS-GC1; ROSGC
Locus ID:	3000
UniProt ID:	Q02846
Cytogenetics:	17p13.1
Summary:	This gene encodes a retina-specific guanylate cyclase, which is a member of the membrane guanylyl cyclase family. Like other membrane guanylyl cyclases, this enzyme has a hydrophobic amino-terminal signal sequence followed by a large extracellular domain, a single membrane spanning domain, a kinase homology domain, and a guanylyl cyclase catalytic domain. In contrast to other membrane guanylyl cyclases, this enzyme is not activated by natriuretic peptides. Mutations in this gene result in Leber congenital amaurosis and cone-rod dystrophy-6 diseases. [provided by RefSeq, Dec 2008]
Protein Families:	Druggable Genome, Protein Kinase, Transmembrane
Protein Pathways:	Olfactory transduction, Purine metabolism

Product images:



Coomassie blue staining of purified GUCY2D protein (Cat# [TP318368]). The protein was produced from HEK293T cells transfected with GUCY2D cDNA clone (Cat# [RC218368]) using MegaTran 2.0 (Cat# [TT210002]).