

## Product datasheet for PH318361

### EXOSC3 (NM\_001002269) Human Mass Spec Standard

#### Product data:

Product Type:	Mass Spec Standards
Description:	EXOSC3 MS Standard C13 and N15-labeled recombinant protein (NP_001002269)
Species:	Human
Expression Host:	HEK293
Expression cDNA Clone or AA Sequence:	RC218361
Predicted MW:	17.1 kDa
Protein Sequence:	>RC218361 representing NM_001002269 Red=Cloning site Green=Tags(s)  MAEPASVAAESLAGSRARAARTVLGQVVLPGEELLLPEQEDAEGPGGAVERPLSLNARACSRVRVCGPG LRRCGDRLLVTKCGRLRHKEPGSGSGGGVYWVDSQQKRYVPVKGHDHIGIYVAKSGDIFKVDVGGSEPAS LSYLSFEGATKRNRPNVQAISRL  TRTRPLEQKLI SEEDLAANDILDYKDDDDKV
Tag:	C-Myc/DDK
Purity:	> 80% as determined by SDS-PAGE and Coomassie blue staining
Concentration:	>0.05 µg/µL as determined by microplate BCA method
Labeling Method:	Labeled with [U- 13C6, 15N4]-L-Arginine and [U- 13C6, 15N2]-L-Lysine
Buffer:	25 mM Tris-HCl, 100 mM glycine, pH 7.3
Storage:	Store at -80°C. Avoid repeated freeze-thaw cycles.
Stability:	Stable for 3 months from receipt of products under proper storage and handling conditions.
RefSeq:	<a href="#">NP_001002269</a>
RefSeq Size:	1070
RefSeq ORF:	492
Synonyms:	bA3J10.7; CGI-102; hRrp-40; p10; PCH1B; RRP40; Rrp40p
Locus ID:	51010
UniProt ID:	<a href="#">Q9NQT5</a> , <a href="#">Q9NYS3</a>



[View online »](#)

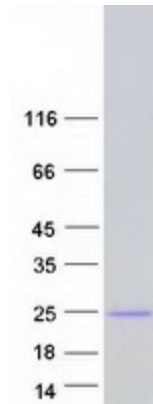
**Cytogenetics:** 9p13.2

**Summary:** This gene encodes a non-catalytic component of the human exosome, a complex with 3'-5' exoribonuclease activity that plays a role in numerous RNA processing and degradation activities. Related pseudogenes of this gene are found on chromosome 19 and 21. Alternatively spliced transcript variants encoding different isoforms have been described. [provided by RefSeq, Jun 2012]

**Protein Families:** Stem cell - Pluripotency

**Protein Pathways:** RNA degradation

### Product images:



Coomassie blue staining of purified EXOSC3 protein (Cat# [TP318361]). The protein was produced from HEK293T cells transfected with EXOSC3 cDNA clone (Cat# [RC218361]) using MegaTran 2.0 (Cat# [TT210002]).