

Product datasheet for PH318359

LNK (SH2B3) (NM_005475) Human Mass Spec Standard

Product data:

Product Type:	Mass Spec Standards
Description:	SH2B3 MS Standard C13 and N15-labeled recombinant protein (NP_005466)
Species:	Human
Expression Host:	HEK293
Expression cDNA Clone or AA Sequence:	RC218359
Predicted MW:	63 kDa
Protein Sequence:	>RC218359 representing NM_005475 Red=Cloning site Green=Tags(s)

MNGPALQPSSPSSAPSASPAAPRGWSEFCELHAVAAARELARQYWLFAREHPQHAPLRAELVSLQFTDL
FQRYFCREVRDGRAPGRDYRDTGRGPPAKAEASPEPGGPAAPGLPKARSSEELAPRPPGPCSFQHFRR
SLRHIFRRRSAGELPAAHTAAAPGTPGEEAETPARPGLAKKFLPWSLAREPPPEALKEAVLRYSLADEAS
MDSGARWQRGLALRRAPGPDGPDVLELFDPPKSSRPKLQAACSSIQEVRRCTRLEMPDNLTYFVLKVK
DRTDIIIFEVGDEQQLNSWMAELSECTGRGLESTEAMHIPSALPSTSSSPRGSTDSLQNGASPGGLLDP
ACQKTDHFLSCYPWFHGPISRVKAQQLVQLQGPDAHGVFLVRQSETRRGEYVLTFFNFQGIKHLRLSLTE
RGQCRVQHLHFPSVVDMLHHFQRSPIPLECGAACDVRLSSVVVVVSQPPGSCNTVLPFSLPHWDESLP
HWGSELGLPHLSSSGCPRGLSPEGLPGRSSPPEQIFHLVPSPEELANSLQHLEHEPVNRARSDYEMDSS
SRSHLRAIDNQYTPL

TRTRPLEQKLI SEEDLAANDILDYKDDDDKV

Tag:	C-Myc/DDK
Purity:	> 80% as determined by SDS-PAGE and Coomassie blue staining
Concentration:	>0.05 µg/µL as determined by microplate BCA method
Labeling Method:	Labeled with [U- ¹³ C ₆ , ¹⁵ N ₄]-L-Arginine and [U- ¹³ C ₆ , ¹⁵ N ₂]-L-Lysine
Buffer:	25 mM Tris-HCl, 100 mM glycine, pH 7.3
Storage:	Store at -80°C. Avoid repeated freeze-thaw cycles.
Stability:	Stable for 3 months from receipt of products under proper storage and handling conditions.
RefSeq:	NP_005466
RefSeq Size:	5423
RefSeq ORF:	1725



[View online »](#)

Synonyms: IDDM20; LNK

Locus ID: 10019

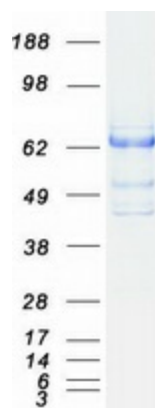
UniProt ID: [Q9UQQ2](#), [Q59H48](#)

Cytogenetics: 12q24.12

Summary: This gene encodes a member of the SH2B adaptor family of proteins, which are involved in a range of signaling activities by growth factor and cytokine receptors. The encoded protein is a key negative regulator of cytokine signaling and plays a critical role in hematopoiesis. Mutations in this gene have been associated with susceptibility to celiac disease type 13 and susceptibility to insulin-dependent diabetes mellitus. Alternatively spliced transcript variants encoding different isoforms have been found for this gene. [provided by RefSeq, Apr 2014]

Protein Pathways: Neurotrophin signaling pathway

Product images:



Coomassie blue staining of purified SH2B3 protein (Cat# [TP318359]). The protein was produced from HEK293T cells transfected with SH2B3 cDNA clone (Cat# [RC218359]) using MegaTran 2.0 (Cat# [TT210002]).