

Product datasheet for PH318337

C16orf13 (METTL26) (NM_032366) Human Mass Spec Standard

Product data:

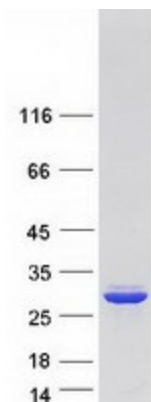
Product Type:	Mass Spec Standards
Description:	C16orf13 MS Standard C13 and N15-labeled recombinant protein (NP_115742)
Species:	Human
Expression Host:	HEK293
Expression cDNA Clone or AA Sequence:	RC218337
Predicted MW:	22.4 kDa
Protein Sequence:	>RC218337 representing NM_032366 Red =Cloning site Green =Tags(s) MLVAAAERNKDPIILHVLQRQYLDPAQRGVRVLEVASGSGQHAAHFARAFPLAEWQPSDQDQRCLDSIAAT TQAQGLTNVKAPLHLDVTGWGWEHWGGILPQSLDLLLCINMAHVSPLRCTEGLFRAAGHLLKPRALLITYG PYAINGKIS PQSNVDFDLMLRCRNP EWGLRDTALLEDLGKASGLLLERMVDMPPANNKCLIFRKN TRTRPLEQKLI SEEDLAANDILDYKDDDDKV
Tag:	C-Myc/DDK
Purity:	> 80% as determined by SDS-PAGE and Coomassie blue staining
Concentration:	>0.05 µg/µL as determined by microplate BCA method
Labeling Method:	Labeled with [U- ¹³ C ₆ , ¹⁵ N ₄]-L-Arginine and [U- ¹³ C ₆ , ¹⁵ N ₂]-L-Lysine
Buffer:	25 mM Tris-HCl, 100 mM glycine, pH 7.3
Storage:	Store at -80°C. Avoid repeated freeze-thaw cycles.
Stability:	Stable for 3 months from receipt of products under proper storage and handling conditions.
RefSeq:	NP_115742
RefSeq Size:	854
RefSeq ORF:	612
Synonyms:	C16orf13; JFP2
Locus ID:	84326
UniProt ID:	Q96S19



[View online »](#)

Cytogenetics: 16p13.3

Product images:



Coomassie blue staining of purified METTL26 protein (Cat# [TP318337]). The protein was produced from HEK293T cells transfected with METTL26 cDNA clone (Cat# [RC218337]) using MegaTran 2.0 (Cat# [TT210002]).