

## Product datasheet for PH318325

### RGP1 (NM\_001080496) Human Mass Spec Standard

#### Product data:

Product Type:	Mass Spec Standards
Description:	RGP1 MS Standard C13 and N15-labeled recombinant protein (NP_001073965)
Species:	Human
Expression Host:	HEK293
Expression cDNA Clone or AA Sequence:	RC218325
Predicted MW:	42.46 kDa
Protein Sequence:	>RC218325 representing NM_001080496 Red=Cloning site Green=Tags(s)

MIEVVAELSRGPVFLAGEALECVVTNPLPPTATSASSEALAWASAQIHCQFHASESRVALPPDSSQP  
DVQPDSQTVFLPHRGERGQCILSTPPKILFCDLRLDPGESKSYSYSEVLPIEGPPSFRGQSVKYVYKLT  
GCQRVNSPITLLRVPLRVLVLTLGLQDVRFQDEAVAPSSPFLEEDEGGKDSWLAELAGERLMAATSCRS  
LHLNYSIDGRGKVGTFGIFKSVYRLGEDVVGTNLNLGEGTVAQLQFSVSLQTEERVQPEYQRRRAGGVP  
VSHVTHARHQESCLHTTRTSFSLPIPLSSTPGFCTAIVSLKWRLHFEFVTSREPLVLLPPVEQPEPTTW  
TGPEQVPVDTFSWDLPIKVLPTSPTLASYAAPGPSTSTITI

TRTRPLEQKLISEEDLAANDILDYKDDDDKV

Tag:	C-Myc/DDK
Purity:	> 80% as determined by SDS-PAGE and Coomassie blue staining
Concentration:	>0.05 µg/µL as determined by microplate BCA method
Labeling Method:	Labeled with [U- <sup>13</sup> C <sub>6</sub> , <sup>15</sup> N <sub>4</sub> ]-L-Arginine and [U- <sup>13</sup> C <sub>6</sub> , <sup>15</sup> N <sub>2</sub> ]-L-Lysine
Buffer:	25 mM Tris-HCl, 100 mM glycine, pH 7.3
Storage:	Store at -80°C. Avoid repeated freeze-thaw cycles.
Stability:	Stable for 3 months from receipt of products under proper storage and handling conditions.
RefSeq:	<u>NP_001073965</u>
RefSeq Size:	1296
RefSeq ORF:	1173
Synonyms:	KIAA0258
Locus ID:	9827



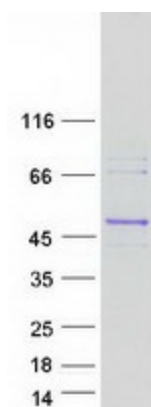
[View online »](#)

UniProt ID: [Q92546](#), [A8K0K1](#)

Cytogenetics: 9p13.3

Summary: The RIC1-RGP1 complex acts as a guanine nucleotide exchange factor (GEF), which activates RAB6A by exchanging bound GDP for free GTP and may thereby required for efficient fusion of endosome-derived vesicles with the Golgi compartment. The RIC1-RGP1 complex participates in the recycling of mannose-6-phosphate receptors.[UniProtKB/Swiss-Prot Function]

### Product images:



Coomassie blue staining of purified RGP1 protein (Cat# [TP318325]). The protein was produced from HEK293T cells transfected with RGP1 cDNA clone (Cat# [RC218325]) using MegaTran 2.0 (Cat# [TT210002]).