

## Product datasheet for PH318311

### DMC1 (NM\_007068) Human Mass Spec Standard

#### Product data:

Product Type:	Mass Spec Standards
Description:	DMC1 MS Standard C13 and N15-labeled recombinant protein (NP_008999)
Species:	Human
Expression Host:	HEK293
Expression cDNA Clone or AA Sequence:	RC218311
Predicted MW:	37.7 kDa
Protein Sequence:	>RC218311 protein sequence Red=Cloning site Green=Tags(s)  MKEDQVVAEPPGFQDEEESLFQDIDLLQKHGINVADIKKLSVGICTIKGIQMTTRRALCNVKGLEAKV DKIKEAANKLIEPGFLTAFEYSEKRKMFVHITTSQEFDKLLGGGIESMAITEAFGEFRTGKTQLSHTLC VTAQLPGAGGYGGKIIIFIDTENTFRPDLRDIADRFNVDHDAVLDNVLYARAYTSEHQMELLDYAAKF HEEAGIFKLLIIDSIMALFRVDFSGRGELAERQQKLAQML SRLQKISEEYNVAVFVTNQMTADPGATMTF QADPKPIGGHILAHASTTRISLRKGRGELRIAKIYDSEMPENEATFAITAGGIGDAKE  TRTRPLEQKLISEEDLAANDILDYKDDDDKV
Tag:	C-Myc/DDK
Purity:	> 80% as determined by SDS-PAGE and Coomassie blue staining
Concentration:	>0.05 µg/µL as determined by microplate BCA method
Labeling Method:	Labeled with [U- <sup>13</sup> C <sub>6</sub> , <sup>15</sup> N <sub>4</sub> ]-L-Arginine and [U- <sup>13</sup> C <sub>6</sub> , <sup>15</sup> N <sub>2</sub> ]-L-Lysine
Buffer:	25 mM Tris-HCl, 100 mM glycine, pH 7.3
Storage:	Store at -80°C. Avoid repeated freeze-thaw cycles.
Stability:	Stable for 3 months from receipt of products under proper storage and handling conditions.
RefSeq:	<u><a href="#">NP_008999</a></u>
RefSeq Size:	2281
RefSeq ORF:	1020
Synonyms:	dj199H16.1; DMC1H; LIM15
Locus ID:	11144



[View online »](#)

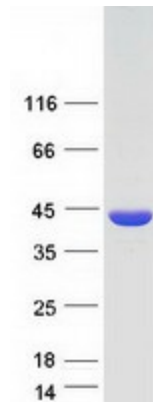
UniProt ID: [Q14565](#)

Cytogenetics: 22q13.1

**Summary:** This gene encodes a member of the superfamily of recombinases (also called DNA strand-exchange proteins). Recombinases are important for repairing double-strand DNA breaks during mitosis and meiosis. This protein, which is evolutionarily conserved, is reported to be essential for meiotic homologous recombination and may thus play an important role in generating diversity of genetic information. Alternative splicing results in multiple transcript variants. [provided by RefSeq, May 2013]

**Protein Families:** Druggable Genome

### Product images:



Coomassie blue staining of purified DMC1 protein (Cat# [TP318311]). The protein was produced from HEK293T cells transfected with DMC1 cDNA clone (Cat# [RC218311]) using MegaTran 2.0 (Cat# [TT210002]).