

Product datasheet for PH318308

SMARCA1 (NM_003069) Human Mass Spec Standard

Product data:

Product Type:	Mass Spec Standards
Description:	SMARCA1 MS Standard C13 and N15-labeled recombinant protein (NP_003060)
Species:	Human
Expression Host:	HEK293
Expression cDNA Clone or AA Sequence:	RC218308
Predicted MW:	123.1 kDa
Protein Sequence:	>RC218308 representing NM_003069 Red=Cloning site Green=Tags(s)

MEQDTAAVAATVAAADATATIVVIEDEQPGPSTSQEEGAAAAATEATAATEKGEKKKEKNVSSFQLKLA
KAPKSEKEMDPEYEEKMKADRAKRFELKQTELFAHFIQPSAQKSPTSPLNMKLRPRIKKDEKQSLIS
AGDYRHRRTQEEDDELLSESRTSNVICRFEVSPSYVKGGLRDYQIRGLNWLISLYENGVNGILADEM
GLGKTLQTIALLGYLKHYRNIPGPHMVLVPKSTLHNWMEFKRWVPSLRVICFVGDKDARAAFIRDEMMP
GEWDVVCVTSYEMVIKEKSVFKFHWRYLVIDEAHRIKNEKSKLSEIVREFKSTNRLLLTGTPLQNNHEL
WALLNFFLLPDVFNASDDFDSWFDTKNCLGDQKLVERLHAVLKPFLLRRIKTDVEKSLPPKKEIKIYGLS
KMQREWYTKILMKDIDVLNSSGKMDKMRLLNILMQLRKCCNHPYLFDGAEPGPPYTTDEHIVSNSGKMVV
LDKLLAKLKEQGSRVLIFSQMTRLLDILEDYCMWRGYEYCRLDQGTPEEEREDKFLVEVFLGQREAEAF
NAPNSSKFIFMLSTRAGGLGINLASADVILYDSDWNPQVDLQAMDRAHRIGQKKPVRVFRITDNTVEE
RIVERAEIKRLRDSIVIQQGRLIDQQSNKLAKEEMLQMI RHGATHVFASKESELTDEDITTLERGEKKT
AEMNERLQKMGESSLRNFRMDIEQSLYKFEGEDYREKQKLGWVIEPPKRERKANYAVDAYFREARVS
EPKIPKAPRPPKQPNVQDFQFFPRLFELLEKEILYYRKTIGYKVPNRPDIPNPAQAQREEQKIDGAEP
LTPEETEEKEKLLTQGFNTWTKRDFNQFIKANEKYGRRDDIENIAREVEGKSPEEVMEYSVFWERCNELQ
DIEKIMAQIERGEARIQRRISIKKALDAKIARYKAPFHQLRIQYGTSGKKNYTEEDRFLICMLHKMGFD
RENVYEEELRQCVRNAPQFRFDWFIKSRTAMEFQRRCNTLISLIEKENMEIEERERAEKKKRATKTPMVKF
SAFS

TRTRPLEQKLISEEDLAANDILDYKDDDDKV

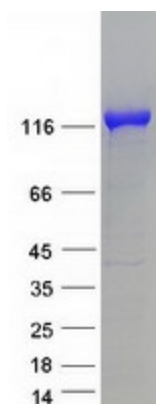
Tag:	C-Myc/DDK
Purity:	> 80% as determined by SDS-PAGE and Coomassie blue staining
Concentration:	>0.05 µg/µL as determined by microplate BCA method
Labeling Method:	Labeled with [U- ¹³ C ₆ , ¹⁵ N ₄]-L-Arginine and [U- ¹³ C ₆ , ¹⁵ N ₂]-L-Lysine
Buffer:	25 mM Tris-HCl, 100 mM glycine, pH 7.3



[View online »](#)

Storage:	Store at -80°C. Avoid repeated freeze-thaw cycles.
Stability:	Stable for 3 months from receipt of products under proper storage and handling conditions.
RefSeq:	NP_003060
RefSeq Size:	4124
RefSeq ORF:	3162
Synonyms:	hSNF2L; ISWI; NURF140; SNF2L; SNF2L1; SNF2LB; SNF2LT; SWI; SWI2
Locus ID:	6594
UniProt ID:	P28370
Cytogenetics:	Xq25-q26.1
Summary:	This gene encodes a member of the SWI/SNF family of proteins. The encoded protein is an ATPase which is expressed in diverse tissues and contributes to the chromatin remodeling complex that is involved in transcription. The protein may also play a role in DNA damage, growth inhibition and apoptosis of cancer cells. Alternative splicing results in multiple transcript variants. [provided by RefSeq, Sep 2013]
Protein Families:	Transcription Factors

Product images:



Coomassie blue staining of purified SMARCA1 protein (Cat# [TP318308]). The protein was produced from HEK293T cells transfected with SMARCA1 cDNA clone (Cat# [RC218308]) using MegaTran 2.0 (Cat# [TT210002]).