

Product datasheet for PH318307

PRPF31 (NM_015629) Human Mass Spec Standard

Product data:

Product Type:	Mass Spec Standards
Description:	PRPF31 MS Standard C13 and N15-labeled recombinant protein (NP_056444)
Species:	Human
Expression Host:	HEK293
Expression cDNA Clone or AA Sequence:	RC218307
Predicted MW:	55.3 kDa
Protein Sequence:	>RC218307 representing NM_015629 Red=Cloning site Green=Tags(s)

MSLADELLADLEEAAAAEEEGGSYGEEEEPAIEDVQEETQLDLSGDSVKTI AKLWDSKMF AEIMMKIEEY
ISKQAKASEVMGPVEAAPEYRVI VDANNLTV E IENELNI IHKFIRDKYSKR FPELES LVPNALDY IRTVK
ELGNSLDKCKNNENLQQIL TNATIMVSVTASTTGGQQLSEEELERLEEACDMALELNASKHRIEYEVES
RMSFIAPNLSIIIGASTAAKIMGVAGGL TNL SKMPACNIMLLGAQRKTL SGFSSTSVLPHTGYIYHSDIV
QSLPPDLRRKAARLVA AKCTLAARVDSFH ESTEGKVG YELKDEIERKFDKWQEP PPVKQVKPLPAPLDGQ
RKKRGGRRYRKMKERLGL TEIRKQANRMSFGEIEEDAYQEDLGFSLGHLGKSGSGRVRQTQVNEATKARI
SKTLQRTLQKQSVVYGGKSTIRDRSSGTASSVAF TPLQGLEIVNPQAAEKKVAEANQKYFSSMAEFLKVK
GEKSGLMST

TRTRPLEQKLI SEEDLAANDILDYKDDDDKV

Tag:	C-Myc/DDK
Purity:	> 80% as determined by SDS-PAGE and Coomassie blue staining
Concentration:	>0.05 µg/µL as determined by microplate BCA method
Labeling Method:	Labeled with [U- 13C6, 15N4]-L-Arginine and [U- 13C6, 15N2]-L-Lysine
Buffer:	25 mM Tris-HCl, 100 mM glycine, pH 7.3
Storage:	Store at -80°C. Avoid repeated freeze-thaw cycles.
Stability:	Stable for 3 months from receipt of products under proper storage and handling conditions.
RefSeq:	<u>NP_056444</u>
RefSeq Size:	2153
RefSeq ORF:	1497



[View online »](#)

Synonyms: NY-BR-99; PRP31; RP11; SNRNP61

Locus ID: 26121

UniProt ID: [Q8WWY3](#)

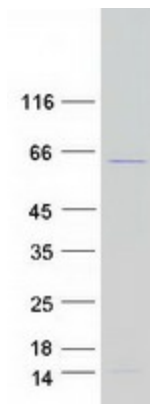
Cytogenetics: 19q13.42

Summary: This gene encodes a component of the spliceosome complex and is one of several retinitis pigmentosa-causing genes. When the gene product is added to the spliceosome complex, activation occurs.[provided by RefSeq, Jan 2009]

Protein Families: Druggable Genome

Protein Pathways: Spliceosome

Product images:



Coomassie blue staining of purified PRPF31 protein (Cat# [TP318307]). The protein was produced from HEK293T cells transfected with PRPF31 cDNA clone (Cat# [RC218307]) using MegaTran 2.0 (Cat# [TT210002]).