

## Product datasheet for PH318292

### CAMLG (NM\_001745) Human Mass Spec Standard

#### Product data:

Product Type:	Mass Spec Standards
Description:	CAMLG MS Standard C13 and N15-labeled recombinant protein (NP_001736)
Species:	Human
Expression Host:	HEK293
Expression cDNA Clone or AA Sequence:	RC218292
Predicted MW:	33 kDa
Protein Sequence:	>RC218292 protein sequence <b>Red</b> =Cloning site <b>Green</b> =Tags(s)  MESMAVATDGGERPAGSGLSASQRRRAELRRRKL MNSEQRINRIMGFHRPGSGAEESQTKSKQQDS DKLNSLSVPSVSKRVVLGDSVSTGTTDQQGGVAEVKGTQLGDKLDSFIKPPECSSDVNLELRQRNRGDLT ADSVQRGSRHGLEQYLSRFEEAMKLRKQLISEKPSQEDGNTTEEFDSFRIFRLVGCALLALGVRAFVCKY LSIFAPFLTLQLAYMGLYKYFPKSEKKIKTTVLTAALLLSGIPAEVINRSMDTYSKMGEVFTDLCVYFFT FIFCHELLDYWGSEVP  <b>TRTRPLEQKLI SEEDLAANDILDYKDDDDKV</b>
Tag:	C-Myc/DDK
Purity:	> 80% as determined by SDS-PAGE and Coomassie blue staining
Concentration:	>0.05 µg/µL as determined by microplate BCA method
Labeling Method:	Labeled with [U- <sup>13</sup> C <sub>6</sub> , <sup>15</sup> N <sub>4</sub> ]-L-Arginine and [U- <sup>13</sup> C <sub>6</sub> , <sup>15</sup> N <sub>2</sub> ]-L-Lysine
Buffer:	25 mM Tris-HCl, 100 mM glycine, pH 7.3
Storage:	Store at -80°C. Avoid repeated freeze-thaw cycles.
Stability:	Stable for 3 months from receipt of products under proper storage and handling conditions.
RefSeq:	<a href="#">NP_001736</a>
RefSeq Size:	2255
RefSeq ORF:	888
Synonyms:	CAML; GET2
Locus ID:	819



[View online »](#)

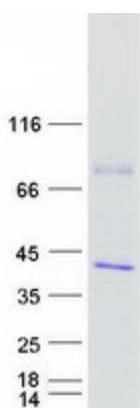
UniProt ID: [P49069](#)

Cytogenetics: 5q31.1

**Summary:** The immunosuppressant drug cyclosporin A blocks a calcium-dependent signal from the T-cell receptor (TCR) that normally leads to T-cell activation. When bound to cyclophilin B, cyclosporin A binds and inactivates the key signaling intermediate calcineurin. The protein encoded by this gene functions similarly to cyclosporin A, binding to cyclophilin B and acting downstream of the TCR and upstream of calcineurin by causing an influx of calcium. This integral membrane protein appears to be a new participant in the calcium signal transduction pathway, implicating cyclophilin B in calcium signaling, even in the absence of cyclosporin. [provided by RefSeq, Jul 2008]

**Protein Families:** Druggable Genome

### Product images:



Coomassie blue staining of purified CAMLG protein (Cat# [TP318292]). The protein was produced from HEK293T cells transfected with CAMLG cDNA clone (Cat# [RC218292]) using MegaTran 2.0 (Cat# [TT210002]).