

## Product datasheet for PH318241

### GAGE2C (NM\_001472) Human Mass Spec Standard

#### Product data:

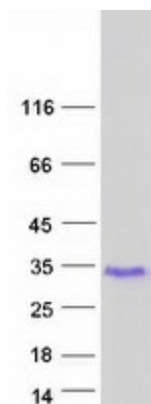
Product Type:	Mass Spec Standards
Description:	GAGE2C MS Standard C13 and N15-labeled recombinant protein (NP_001463)
Species:	Human
Expression Host:	HEK293
Expression cDNA Clone or AA Sequence:	RC218241
Predicted MW:	12.6 kDa
Protein Sequence:	>RC218241 representing NM_001472 <b>Red</b> =Cloning site <b>Green</b> =Tags(s)  MSWRGRSTYRPRPRRYVEPPEMIGPMRPEQFSDEVEPATPEEGEPATQRQDPAAAQEGEDEGASAGQGPK PEAHSQEQGHPQTGCECEDGPDGQEMDPPNPEEVKTPEEGEKQSQC  <b>TR</b> TRPLEQKLISEEDLAANDILDYKDDDDKV
Tag:	C-Myc/DDK
Purity:	> 80% as determined by SDS-PAGE and Coomassie blue staining
Concentration:	>0.05 µg/µL as determined by microplate BCA method
Labeling Method:	Labeled with [U- 13C6, 15N4]-L-Arginine and [U- 13C6, 15N2]-L-Lysine
Buffer:	25 mM Tris-HCl, 100 mM glycine, pH 7.3
Storage:	Store at -80°C. Avoid repeated freeze-thaw cycles.
Stability:	Stable for 3 months from receipt of products under proper storage and handling conditions.
RefSeq:	<a href="#">NP_001463</a>
RefSeq Size:	530
RefSeq ORF:	348
Synonyms:	CT4.2; GAGE-2; GAGE-2C; GAGE2
Locus ID:	2574
UniProt ID:	<a href="#">Q13066</a>
Cytogenetics:	Xp11.23



[View online »](#)

**Summary:**

This gene belongs to a family of genes that are expressed in a variety of tumors but not in normal tissues, except for the testis. The sequences of the family members are highly related but differ by scattered nucleotide substitutions. The antigenic peptide YRPRPRRY, which is also encoded by several other family members, is recognized by autologous cytolytic T lymphocytes. [provided by RefSeq, Jul 2008]

**Product images:**

Coomassie blue staining of purified GAGE2C protein (Cat# [TP318241]). The protein was produced from HEK293T cells transfected with GAGE2C cDNA clone (Cat# [RC218241]) using MegaTran 2.0 (Cat# [TT210002]).