

Product datasheet for PH318210

Alpha Fodrin (SPTAN1) (NM_003127) Human Mass Spec Standard

Product data:

Product Type:	Mass Spec Standards
Description:	SPTAN1 MS Standard C13 and N15-labeled recombinant protein (NP_003118)
Species:	Human
Expression Host:	HEK293
Expression cDNA Clone or AA Sequence:	RC218210
Predicted MW:	285 kDa



[View online »](#)

Protein Sequence: >RC218210 representing NM_003127
 Red=Cloning site Green=Tags(s)

MDPSGVKVLETAEDIQERRQVLDRYHRFKELSTLRRQKLEDSYRFQFFQRDAEELEKWIQEKLQIASDE
 NYKDPTNLQGLQKHQAFEAEVQANSQAIVKLDETNLMISEGHFASETIRTRLMELHRQWELLLEKMR
 KGIKLLQAQKLVQYLRECEDVMDWINDKEAIVTSEELGQDLEHVEVLQKKFEEFQTDMAAHEERVNEV
 NQFAAKLIQEQHPPEELIKTKQDEVNAAWQRLKGLALQRQKLFGAEEVQRFNRDVEETISWIKEKEQLM
 ASDDFGRDLASVQALLRKHEGLERDLAALEDKVKALCAEADRLQQSHPLSATQIQVKREELITNWEQIR
 TLAERHARLNDYRFLQRFADFRDLTSWVTEMKALINADELASDVAGAEALLDRHQEHKGEIDAHEDSFK
 SDESQALLAAGHYASDEVREKLTVLSEERAALLELWELRRQYEQCMDLQLFYRDEQVNDWMSKQEAFL
 LNEDELGSLDSVEALLKKHEDFEKLSAQEEKITALDEFATKLIQNNHYAMEDVATRRDALLSRRNALHE
 RAMRRRAQLADSFHLQQFFRDSDELKSWVNEKMTATDEAYKDPNSLQGVQKHQAFEAELSANQSRIDA
 LEKAGQKLDIVNHYAKDEVAARMNEVISLWKKLLEATELKGIKLREANQQQFNRNVEDIELWLVEVEGH
 LASDDYQKDLTNVQNLQKKHALLEADVAHQDRIDGITIQARQFQDAGHFDAENIKKKQEALVARYEALK
 EPMVARKQKLADSLRLQQLFRDVEDEETWIREKEPIAASNTRGKDLIGVQNLKKHQALQAEIAGHPRI
 KAVTQKGNAMVEEGHFAEDVKAKLHELNQKWEALKAKASQRRQDLEDSLQAQQYFADANEAESWMRKE
 PTVGSTDYKDEDSAEALLKKHEALMSDL SAYGSSIQALREQAQSCRQQVAPTDEETGKELVLAALYDQ
 E KSPREVTMKGKIDILTLNSTNKDWWKVEVNDRQGFVPAAYVKKLDPAQSASRENLLLEEQGSIALRQEQ
 IDNQTRITKEAGSVSLRMKQVEELYHSLLELGEKRGKMLEKSCCKFMLFREANELQQWINEKEAALTS
 EEVADLEQVEVLQKKFDDFQKDLKANESRLKDKINKVAEDLESEGLMAEEVQAVQQQEVYGMMPRDET
 DSKTAS PWKSARLMVHTVATFNSIKELNERWRSLLQAEERSQLLGSAAHEVQRFHRDADETKEWIEEK
 NQALNTDNYGHDLASVQALQRKHEGFERDLAALGDKVNSLGETAERLIQSHPEAEDLQEKCTELNQAW
 SSLGKRADQ RKAKLGDSDLQRFLSDFRDLMSWINGIRGLVSSDELAKDVTGAEALLERHQEHRTEID
 ARAGTFQAFEQ FGQQLLAHGHYASPEIKQKLDILDQERADLEKAWVQRRMMLDQCLELQLFHRDCE
 QENWMAAREAF LNTEDKGDLSDSVEALIKKHEDFDKAINVQEEKIAALQAFADQLIAAGHYAKGDISS
 RRNEVLDRWRRLKAQM IEKRSKLGESQTLQQFSRDVDEIEAWISEKLQTASDESYKPTNIQSKH
 QKHQAFEAELHANADRIRGVI DMGNLSIERGACAGSEDAVKARLAALADQWQFLVQKSAEK
 SQKLEANKQQNFNTGIKDFDFWLSEVEAL LASEDYGKDLASVNNLLKKHQLEADISAHEDRL
 KDLNSQADSLMTSSAFDTSQVKDKRDTINGRFQKIK SMAASRRAKLNESHRLHQFFRDMDEE
 SWIKEKLLVGSSEYGRDLTGVQNLRKKHKRLEAELAAHEPAI QGVLDTGKLLSDDNTIGKEE
 IQQRLAQFVEHWKELKQLAAARGQRLSESLYQQFVANVEEEEAWINEKM TIVASEDYGDTLAA
 IQGLLKKHEAFETDFTVHKDRVNDVCTNGQDLIKKNNHHEENISSKMKGLNGKVS
 DLEKAAAQRKAKLDENSAFLQFNWKADVVEVSWIGEKENSLKTDDYGRDLSVQTLTKQETFDAGL
 QAFQQEGIANITALKQDLAAKHVQSKAIEARHASLMKRWSQLLANSAARKKLLLEAQSHFRKVEDL
 FLTFAKKASAFNSWFENAEEDLTDVPRCNSLEEIKALREAHDAFRSSLSSAQADFNQLAELDRQ
 IKSFRVASNPYTFW TMEALEETWRNLQKIIKERELQKEQRQEEENDKLRQEFQAHANAFHQW
 IQETRTRYLLDGSVMVEESGT LESQLEATKRKHQEIAMRSQKKEIDLGAAMEEALILDNKY
 TEHSTVGLAQWQDLQDLMGMRMQHNLEQ QIQARNTTGVTEEALKEFSMMFKHFDKDKS
 GRNLNHQEFKSLRSLGYDLPMVEEGEPDPEFEAILDTVDP NRDGHVSLQEYMAFMISRE
 TENVKSSEEIESAFRALSSEKGPYVTKHEELYQNLTREQADYCVSHMKPYVD GKGRELPTAF
 DYVEFTRSLFVN

TRTRPLEQKLI SEEDLAANDILDYKDDDDKV

Tag: C-Myc/DDK

Purity: > 80% as determined by SDS-PAGE and Coomassie blue staining

Concentration: >0.05 µg/µL as determined by microplate BCA method

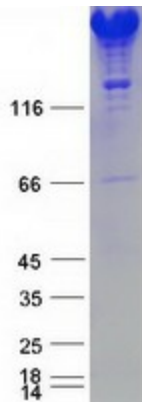
Labeling Method: Labeled with [U- ¹³C₆, ¹⁵N₄]-L-Arginine and [U- ¹³C₆, ¹⁵N₂]-L-Lysine

Buffer: 25 mM Tris-HCl, 100 mM glycine, pH 7.3

Storage: Store at -80°C. Avoid repeated freeze-thaw cycles.

Stability:	Stable for 3 months from receipt of products under proper storage and handling conditions.
RefSeq:	NP_003118
RefSeq Size:	7892
RefSeq ORF:	7416
Synonyms:	DEE5; EIEE5; NEAS; SPTA2
Locus ID:	6709
UniProt ID:	Q13813
Cytogenetics:	9q34.11
Summary:	Spectrins are a family of filamentous cytoskeletal proteins that function as essential scaffold proteins that stabilize the plasma membrane and organize intracellular organelles. Spectrins are composed of alpha and beta dimers that associate to form tetramers linked in a head-to-head arrangement. This gene encodes an alpha spectrin that is specifically expressed in nonerythrocytic cells. The encoded protein has been implicated in other cellular functions including DNA repair and cell cycle regulation. Mutations in this gene are the cause of early infantile epileptic encephalopathy-5. Alternate splicing results in multiple transcript variants. [provided by RefSeq, Sep 2010]
Protein Families:	Druggable Genome
Protein Pathways:	Tight junction

Product images:



Coomassie blue staining of purified SPTAN1 protein (Cat# [TP318210]). The protein was produced from HEK293T cells transfected with SPTAN1 cDNA clone (Cat# [RC218210]) using MegaTran 2.0 (Cat# [TT210002]).