

## Product datasheet for PH318203

### RPL19 (NM\_000981) Human Mass Spec Standard

#### Product data:

Product Type:	Mass Spec Standards
Description:	RPL19 MS Standard C13 and N15-labeled recombinant protein (NP_000972)
Species:	Human
Expression Host:	HEK293
Expression cDNA Clone or AA Sequence:	RC218203
Predicted MW:	23.3 kDa
Protein Sequence:	>RC218203 representing NM_000981 Red=Cloning site Green=Tags(s)  MSMLRLQKRLASSVLRGKKKVWLDPNETNEIANANSRQQIRKLIKDGLIIRKPVTVHSRARCRKNTLAR RKGRHMGIGKRKGTANARMPEKVTWRRMRILRLLRRYRESKKIDRHMYSLYLKVKGNVFKNKRILME HIHKLKADKARKLLADQAEARRSKTKEARKRREERLQAKKEEIIKTLKSKEEETKK  TRTRPLEQKLISEEDLAANDILDYKDDDDKV
Tag:	C-Myc/DDK
Purity:	> 80% as determined by SDS-PAGE and Coomassie blue staining
Concentration:	>0.05 µg/µL as determined by microplate BCA method
Labeling Method:	Labeled with [U- <sup>13</sup> C <sub>6</sub> , <sup>15</sup> N <sub>4</sub> ]-L-Arginine and [U- <sup>13</sup> C <sub>6</sub> , <sup>15</sup> N <sub>2</sub> ]-L-Lysine
Buffer:	25 mM Tris-HCl, 100 mM glycine, pH 7.3
Storage:	Store at -80°C. Avoid repeated freeze-thaw cycles.
Stability:	Stable for 3 months from receipt of products under proper storage and handling conditions.
RefSeq:	<u><a href="#">NP_000972</a></u>
RefSeq Size:	748
RefSeq ORF:	588
Synonyms:	L19
Locus ID:	6143
UniProt ID:	<u><a href="#">P84098</a></u>



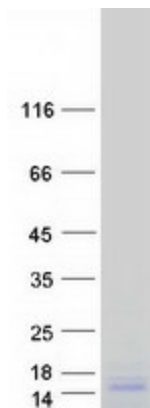
[View online »](#)

**Cytogenetics:** 17q12

**Summary:** Ribosomes, the organelles that catalyze protein synthesis, consist of a small 40S subunit and a large 60S subunit. Together these subunits are composed of 4 RNA species and approximately 80 structurally distinct proteins. This gene encodes a ribosomal protein that is a component of the 60S subunit. The protein belongs to the L19E family of ribosomal proteins. It is located in the cytoplasm. As is typical for genes encoding ribosomal proteins, there are multiple processed pseudogenes of this gene dispersed through the genome. [provided by RefSeq, Jul 2008]

**Protein Pathways:** Ribosome

### Product images:



Coomassie blue staining of purified RPL19 protein (Cat# [TP318203]). The protein was produced from HEK293T cells transfected with RPL19 cDNA clone (Cat# [RC218203]) using MegaTran 2.0 (Cat# [TT210002]).