

Product datasheet for PH318144

C1orf172 (KDF1) (NM_152365) Human Mass Spec Standard

Product data:

Product Type:	Mass Spec Standards
Description:	C1orf172 MS Standard C13 and N15-labeled recombinant protein (NP_689578)
Species:	Human
Expression Host:	HEK293
Expression cDNA Clone or AA Sequence:	RC218144
Predicted MW:	43.5 kDa
Protein Sequence:	>RC218144 representing NM_152365 Red=Cloning site Green=Tags(s) MPRPGHPRPASGPPRLGPWERPTELCLETYDKPPQPPSRRTRRPDKDPGHGHPESITFISGSAEPALE SPTCCLLWRPWWEWCRAAFCFRRCRDCLQRCGACVRGCSPCLSTEDSTEGTAEANWAKEHNGVPPSPDR APPSRRDGQRLKSTMGSSFYSPDVKLGIPVYPYPRATSPAPDADSCCKEPLADPPPMRHLSPSTFASSP RGSEYYSFHESDLDLPEMGSGSMSSREIDVLIFKKLTELFVHQIDELAKCTSDTVFLEKTSKISDLIS SITQDYHLDEQDAEGRVIRIIRISTRKSRARPQTSEGRSTRAAAPTAAAPDSGHETMVGSGLSQDELTV QISQETTADAIAARKLRPYGAPGYPASHDSSFQGTDTDSSGAPLLQVYC TRTRPLEQKLISEEDLAANDILDYKDDDDKV
Tag:	C-Myc/DDK
Purity:	> 80% as determined by SDS-PAGE and Coomassie blue staining
Concentration:	>0.05 µg/µL as determined by microplate BCA method
Labeling Method:	Labeled with [U- ¹³ C ₆ , ¹⁵ N ₄]-L-Arginine and [U- ¹³ C ₆ , ¹⁵ N ₂]-L-Lysine
Buffer:	25 mM Tris-HCl, 100 mM glycine, pH 7.3
Storage:	Store at -80°C. Avoid repeated freeze-thaw cycles.
Stability:	Stable for 3 months from receipt of products under proper storage and handling conditions.
RefSeq:	NP_689578
RefSeq Size:	1785
RefSeq ORF:	1194
Synonyms:	C1orf172; ECTD12
Locus ID:	126695



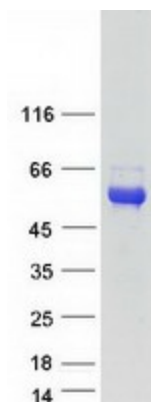
[View online »](#)

UniProt ID: [Q8NAX2](#)

Cytogenetics: 1p36.11

Summary: Plays a role in the regulation of the epidermis formation during early development. Required both as an inhibitor of basal cell proliferation and a promoter of differentiation of basal progenitor cell progeny (By similarity).[UniProtKB/Swiss-Prot Function]

Product images:



Coomassie blue staining of purified KDF1 protein (Cat# [TP318144]). The protein was produced from HEK293T cells transfected with KDF1 cDNA clone (Cat# [RC218144]) using MegaTran 2.0 (Cat# [TT210002]).