

## Product datasheet for PH318129

### Secretin (SCT) (NM\_021920) Human Mass Spec Standard

#### Product data:

Product Type:	Mass Spec Standards
Description:	SCT MS Standard C13 and N15-labeled recombinant protein (NP_068739)
Species:	Human
Expression Host:	HEK293
Expression cDNA Clone or AA Sequence:	RC218129
Predicted MW:	12.8 kDa
Protein Sequence:	>RC218129 representing NM_021920 Red=Cloning site Green=Tags(s)  MAPRPLLLLLLLLLGGSAARPAPPRARRHSDGFTTSELSRLREGARLQRLQLGLVGRSEQDAENSMWTR LSAGLLCPSGSNMPILQAWMPLDGTWSPWLPPGPMVSEPAGAAAEGTLRPR  TRTRPLEQKLISEEDLAANDILDYKDDDDKV
Tag:	C-Myc/DDK
Purity:	> 80% as determined by SDS-PAGE and Coomassie blue staining
Concentration:	>0.05 µg/µL as determined by microplate BCA method
Labeling Method:	Labeled with [U- 13C6, 15N4]-L-Arginine and [U- 13C6, 15N2]-L-Lysine
Buffer:	25 mM Tris-HCl, 100 mM glycine, pH 7.3
Storage:	Store at -80°C. Avoid repeated freeze-thaw cycles.
Stability:	Stable for 3 months from receipt of products under proper storage and handling conditions.
RefSeq:	<a href="#">NP_068739</a>
RefSeq Size:	514
RefSeq ORF:	363
Locus ID:	6343
UniProt ID:	<a href="#">P09683</a>
Cytogenetics:	11p15.5



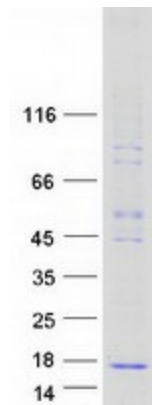
[View online »](#)

**Summary:**

This gene encodes a member of the glucagon family of peptides. The encoded preproprotein is secreted by endocrine S cells in the proximal small intestinal mucosa as a prohormone, then proteolytically processed to generate the mature peptide hormone. The release of this active peptide hormone is stimulated by either fatty acids or acidic pH in the duodenum. This hormone stimulates the secretion of bile and bicarbonate in the duodenum, pancreatic and biliary ducts. [provided by RefSeq, Feb 2016]

**Protein Families:**

Druggable Genome, Secreted Protein

**Product images:**

Coomassie blue staining of purified SCT protein (Cat# [TP318129]). The protein was produced from HEK293T cells transfected with SCT cDNA clone (Cat# [RC218129]) using MegaTran 2.0 (Cat# [TT210002]).