

Product datasheet for PH318104

PELI3 (NM_145065) Human Mass Spec Standard

Product data:

Product Type:	Mass Spec Standards
Description:	PELI3 MS Standard C13 and N15-labeled recombinant protein (NP_659502)
Species:	Human
Expression Host:	HEK293
Expression cDNA Clone or AA Sequence:	RC218104
Predicted MW:	50.6 kDa
Protein Sequence:	>RC218104 representing NM_145065 Red=Cloning site Green=Tags(s)

MVLEGNPEVGSPTSRLQHRGNKGSCVLSPPGEDAQPGEEPIKYGELIVLGCCEEEGEETAQRGEVTGP
RAHSCYNGCLASGDKGRRRRLALSRRSHANGVKPDVMHHISTPLVSKALSNRGQHSISYTLRSRSHVIV
EYTHSDTDMFQIGRSTENMIDFVVTDTSPPGGAAEGPSAQSTISRYACRILCDRRPPYTARIYAAGFDA
SSNIFLGERAAKWRTPDGLMDGLTTNGVLVMPAGGFSEDSAPGVWREISVCGNVYTLRDSRSAQQRGKL
VENESNVLQDGSLLDLCGATLLWRTPAGLLRAPTLKQLEAQRQEAANAARPQCPVGLSTLAFPSPARGRTA
PDKQQPWVYVRCGHVHGYPGWGCRREGRQERECPLCRLVGPYVPLWLGQEAAGLCLDPGPPSHAFAPCGH
VCSEKTARYWAQTPLPHGTHAFHAACPFCAWLTGEHGCVRLIFQGPLD

TRTRPLEQKLISEEDLAANDILDYKDDDDKV

Tag:	C-Myc/DDK
Purity:	> 80% as determined by SDS-PAGE and Coomassie blue staining
Concentration:	>0.05 µg/µL as determined by microplate BCA method
Labeling Method:	Labeled with [U- ¹³ C ₆ , ¹⁵ N ₄]-L-Arginine and [U- ¹³ C ₆ , ¹⁵ N ₂]-L-Lysine
Buffer:	25 mM Tris-HCl, 100 mM glycine, pH 7.3
Storage:	Store at -80°C. Avoid repeated freeze-thaw cycles.
Stability:	Stable for 3 months from receipt of products under proper storage and handling conditions.
RefSeq:	<u>NP_659502</u>
RefSeq Size:	2697
RefSeq ORF:	1407
Locus ID:	246330



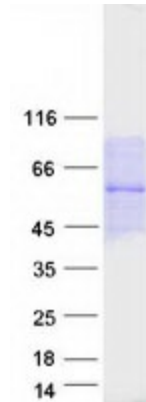
[View online »](#)

UniProt ID: [Q8N2H9](#), [A0A024R5B1](#)

Cytogenetics: 11q13.2

Summary: The protein encoded by this gene is a scaffold protein and an intermediate signaling protein in the innate immune response pathway. The encoded protein helps transmit the immune response signal from Toll-like receptors to IRAK1/TRAF6 complexes. Several transcript variants encoding different isoforms have been found for this gene.[provided by RefSeq, Jul 2011]

Product images:



Coomassie blue staining of purified PELI3 protein (Cat# [TP318104]). The protein was produced from HEK293T cells transfected with PELI3 cDNA clone (Cat# [RC218104]) using MegaTran 2.0 (Cat# [TT210002]).