

Product datasheet for **PH318098**

myosin heavy chain 3 (MYH3) (NM_002470) Human Mass Spec Standard

Product data:

Product Type:	Mass Spec Standards
Description:	MYH3 MS Standard C13 and N15-labeled recombinant protein (NP_002461)
Species:	Human
Expression Host:	HEK293
Expression cDNA Clone or AA Sequence:	RC218098
Predicted MW:	224.4 kDa



[View online »](#)

Protein Sequence:	<p>>RC218098 representing NM_002470 Red=Cloning site Green=Tags(s)</p> <p>MSSDTEMEVFGLAAPPFLRKSEKERIEAQNQPFDAKTYCFVVDSSKEEYAKGKIKSSQDGKVTVEDNRTL VVKPEDVYAMNPPKFDRIEDMAMLTHLNEPAVL YNLKDRYTSWMIYTYSGLFCVTVNPYKWL PVYNPEVV EGYRGGKRQEAPPHIFSI SDNAYQFML TDRENQSILITGESGAGKTVNTRKVIQYFATIAATGDLAKKKD SKMKGTLEDQIISANPLLEAFGNAKTVRNDNSSRFGKFI RHFHGTGKLASADIETYLLEKSRVTFQLKA ERSYHIFYQILSNKKPELIELLLITNPDYDYPFISQGEILVASIDDAEELLATDSAIDILGFTPEEKSGL YKLTGAVMHYGNMKFKQKQREEQAEPDGTVEADKTAYLMGLNSSDLLKALCFPRVKVGNVYVTKGQTVDQ VHHAVNALSKSVYEKFLWMVTRINQQLDTKLPRQHFIVGLDIAGFEIFEYNSLEQLCINFNTEKLNQFF NHHMFVLEQEEYKKEGIEWTFIDFGMDLAACIELIEKPMGIFSI LEEECMFPKATDTSFKNLYDQHLGK SNNFQKPKVVKGRAEAHFSLIHYAGTVDYSVSGWLEKNKDPLNETVVGLYQKSSNRLLAHLYATFATADA DSGKKKVAKKKSSSFQTVSALFRENLNKLSNLRTHPHFVRCIIPNETKTPGAMEHSLVLHQLRCNGVL EGIRICRKGFPNRILYGFDFQRYRVLNASAIPEGQFIDSKKACEKLLASIDIDHTQYKFGHTKVFVKAGL LGTLEEMRDDRLAKLITRTQAVCRGFLMRVEFQKMQRRRESIFCIQYNIRSFMNVKHWPWMKLFKIKPL LKSAETEKEMATMKEEFQKTKDELAKSEAKRKELEEKLVTLVQEKNLQLQVQAESENLLDAEERCQDLI KAKFQLEAKI KEVTERAEDEEEINAELTAKKRKLEDECSSELKDDIDDLLELTLAKVEKEKHATENKVNLT EELSGLDETI AKLTREKKALQEAHQALDDLQAEEDKVNLSNKT SKLEQQVEDLESSLEQEKKLRVDLE RNKRKLEGD LKLAQESILDL ENDKQQDLERLKKKDFEYCYQLQSKVEDEQTLGLQFQKKIKELQARIEELE EEIEAERATRAKTEKQRSYARELEELSERLEEAGGVTSTQIELNKKREAEFLKLRDLEEATLQHEAMV AALRKKHADSV AELGEQIDNLQRVKQKLEKEKSEFKLEIDDLSSMESVSKSKANLEKICRTLEDQLSEA RGKNEEIQRSLSLTTQKSRLQTEAGELSRQLEEKESIVS QLSRSKQAF TQQTEELKRQLEENKAKNAL AHALQSSRHDCDLLREQYEEEQEGKAELQRALSKANSEVAQWRTKYETDAIQRTEELEEAKKKLAQRQLD SEEQVEAVNAK CASLEKTKQRLQGEVEDLMVDVERANSLAAALDKKQRNFDKVLAEWKTKCEESQAELEA SLKESRSLSTELFKLKNAYEEALDQLETYKRENKNEQE IADLTEQIAENGKTIHELEKSRKQIELEKAD IQLALEEAEEA LEHEEAKILRIQLELTQVQSEIDRKIAEKDEEIEQLKRN YQRTVETMQSALDAEVRSRN EAIRLKKKMEGDLNEIEIQLSHANRQAETLKHLSVQGLKDTQLHLDDALRGQEDLKEQLAIVERRAN LLQAEVEELRATLEQTERARKLAEQELDSNERVQLLHTQNTSLIHTKKKLETDLMQLQSEVEDASRDAR NAEEKAKKAITDAAMAEELKKEQD TSAHLERMKNLEQT VKDLQHRLEAEQLALGGKKQIQKLETRI RELEFELEGEQKNTESVGLRKYERRVKELTYQSEEDRKNVLRQLD VDKLQVKVKS YKRQAEAEDEQA NAHLTKFRKAQHELEEAERADIAESQVNKLRAKTRDFTSSRMVHSEEE</p> <p>TRTRPLEQKLISEEDLAANDILDYKDDDDKV</p>
Tag:	C-Myc/DDK
Purity:	> 80% as determined by SDS-PAGE and Coomassie blue staining
Concentration:	>0.05 µg/µL as determined by microplate BCA method
Labeling Method:	Labeled with [U- ¹³ C ₆ , ¹⁵ N ₄]-L-Arginine and [U- ¹³ C ₆ , ¹⁵ N ₂]-L-Lysine
Buffer:	25 mM Tris-HCl, 100 mM glycine, pH 7.3
Storage:	Store at -80°C. Avoid repeated freeze-thaw cycles.
Stability:	Stable for 3 months from receipt of products under proper storage and handling conditions.
RefSeq:	NP_002461
RefSeq Size:	6061
RefSeq ORF:	5820

Synonyms: CPSFS1A; CPSFS1B; CPSKF1A; CPSKF1B; DA2A; DA2B; DA2B3; DA8; HEMHC; MYHC-EMB; MYHSE1; SMHCE

Locus ID: 4621

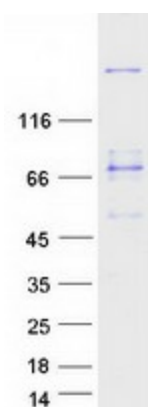
UniProt ID: [P11055](#), [Q5GJ67](#)

Cytogenetics: 17p13.1

Summary: Myosin is a major contractile protein which converts chemical energy into mechanical energy through the hydrolysis of ATP. Myosin is a hexameric protein composed of a pair of myosin heavy chains (MYH) and two pairs of nonidentical light chains. This gene is a member of the MYH family and encodes a protein with an IQ domain and a myosin head-like domain. Mutations in this gene have been associated with two congenital contracture (arthrogryposis) syndromes, Freeman-Sheldon syndrome and Sheldon-Hall syndrome. [provided by RefSeq, Jul 2008]

Protein Pathways: Tight junction, Viral myocarditis

Product images:



Coomassie blue staining of purified MYH3 protein (Cat# [TP318098]). The protein was produced from HEK293T cells transfected with MYH3 cDNA clone (Cat# [RC218098]) using MegaTran 2.0 (Cat# [TT210002]).