

Product datasheet for PH318090

ASPG (NM_001080464) Human Mass Spec Standard

Product data:

Product Type:	Mass Spec Standards
Description:	ASPG MS Standard C13 and N15-labeled recombinant protein (NP_001073933)
Species:	Human
Expression Host:	HEK293
Expression cDNA Clone or AA Sequence:	RC218090
Predicted MW:	61.4 kDa
Protein Sequence:	>RC218090 representing NM_001080464 Red=Cloning site Green=Tags(s)

MARAVGPERRLLAVYTGGTIGMRSELGVLVPGTGLAAILRTLPMFHDEEHARARGLSEDTLVLPPASRNQ
RILYTVLEECQPLFDSSDMTIAEWWCLAQTIKRHYEQYHGFFVVIHGTDTMAFAASMLSFMLENLQKTIVILT
GAQVPIHALWSDGRENLLGALLMAGQYV IPEVCLFFQNLFRGNRATKVDARRFAAF CSPNLLPLATVGA
DITINRELVRKVDGKAGLVVHSSMEQDVGLLRYPGIPAALVRAFLQPPLKGVVMEFTFGSGNGPTKPDLL
QELRVATERGLVIVNCTHCLQGAVTTDYAAGMAMAGAGVISGFDMTSEALAKLSYVLGQPLSLDVRKE
LLTKDLRGEMTPPSVEERRPSLQGNLGGGVSWLLSLSGSQEADALRNALVPSLACAAAHAGDVEALQAL
VELGSDLGLVDFNGQTPHAAAARGGHTAVTMLLQRGVDVNTTRDTDGFSPLLLAVRGRHPGVIIGLLREAG
ASLSTQLEEEAGTEL CRLAYRADLEGLQVWWQAGADLQPGYDGHSAHVAAAGNLAVVAFLQSLEGAV
GAQAPCPEPSCFQEVLPGV

TRTRPLEQKLI SEEDLAANDILDYKDDDDKV

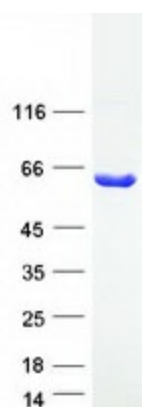
Tag:	C-Myc/DDK
Purity:	> 80% as determined by SDS-PAGE and Coomassie blue staining
Concentration:	>0.05 µg/µL as determined by microplate BCA method
Labeling Method:	Labeled with [U- ¹³ C ₆ , ¹⁵ N ₄]-L-Arginine and [U- ¹³ C ₆ , ¹⁵ N ₂]-L-Lysine
Buffer:	25 mM Tris-HCl, 100 mM glycine, pH 7.3
Storage:	Store at -80°C. Avoid repeated freeze-thaw cycles.
Stability:	Stable for 3 months from receipt of products under proper storage and handling conditions.
RefSeq:	<u>NP_001073933</u>
RefSeq Size:	1844
RefSeq ORF:	1737



[View online »](#)

Synonyms:	C14orf76; GPA/WT; LYSOLP
Locus ID:	374569
UniProt ID:	Q86U10
Cytogenetics:	14q32.33
Summary:	Exhibits lysophospholipase, transacylase, PAF acetylhydrolase and asparaginase activities. [UniProtKB/Swiss-Prot Function]

Product images:



Coomassie blue staining of purified ASPG protein (Cat# [TP318090]). The protein was produced from HEK293T cells transfected with ASPG cDNA clone (Cat# [RC218090]) using MegaTran 2.0 (Cat# [TT210002]).