

Product datasheet for PH318076

SYTL2 (NM_032379) Human Mass Spec Standard

Product data:

Product Type:	Mass Spec Standards
Description:	SYTL2 MS Standard C13 and N15-labeled recombinant protein (NP_115755)
Species:	Human
Expression Host:	HEK293
Expression cDNA Clone or AA Sequence:	RC218076
Predicted MW:	42.6 kDa
Protein Sequence:	>RC218076 representing NM_032379 Red=Cloning site Green=Tags(s) MSKSVP AFLQDESDDRETDTASESSYQLSRHKKSPSSLTNLSSSSGMTSLSSVSGSVMSVYSGDFGNLEV KGNIQFAIEYVESLKELVHVFVAQCKDLAAADVKKQRSDPYVKAYLLPDKGKMGKKKTLVVKKTLNPVYNE ILRYKIEKQILKTQKLNLSIWRDTRFKRNSFLGVELDLETWDWQNKQNKQLRWYPLKRRKTAPVALEAEN RGMKLLALQYVPEPVPVKLPTTGEVHIWVKECLDLPLLRGSHLSNFVKCTILPDTSRKSRQKTRAVGKT TNPIFNHTMVDGFRPEDLMEACVELTVWDHYKLTNQFLGGLRIGFGTGKSYGTEVDWMDSTSEEVALWE KMNPNPTWIEATLPLRMLLIAKISK TRTRPLEQKLI SEEDLAANDILDYKDDDDKV
Tag:	C-Myc/DDK
Purity:	> 80% as determined by SDS-PAGE and Coomassie blue staining
Concentration:	>0.05 µg/µL as determined by microplate BCA method
Labeling Method:	Labeled with [U- ¹³ C ₆ , ¹⁵ N ₄]-L-Arginine and [U- ¹³ C ₆ , ¹⁵ N ₂]-L-Lysine
Buffer:	25 mM Tris-HCl, 100 mM glycine, pH 7.3
Storage:	Store at -80°C. Avoid repeated freeze-thaw cycles.
Stability:	Stable for 3 months from receipt of products under proper storage and handling conditions.
RefSeq:	<u>NP_115755</u>
RefSeq Size:	2407
RefSeq ORF:	1128
Synonyms:	CHR11SYT; EXO4; SGA72M; SLP2; SLP2A
Locus ID:	54843



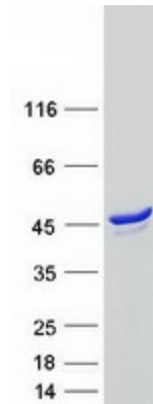
[View online »](#)

UniProt ID: [Q9HCH5](#)

Cytogenetics: 11q14.1

Summary: The protein encoded by this gene is a synaptotagmin-like protein (SLP) that belongs to a C2 domain-containing protein family. The SLP homology domain (SHD) of this protein has been shown to specifically bind the GTP-bound form of Ras-related protein Rab-27A (RAB27A). This protein plays a role in RAB27A-dependent vesicle trafficking and controls melanosome distribution in the cell periphery. Alternative splicing results in multiple transcript variants encoding distinct isoforms.[provided by RefSeq, Jun 2009]

Product images:



Coomassie blue staining of purified SYTL2 protein (Cat# [TP318076]). The protein was produced from HEK293T cells transfected with SYTL2 cDNA clone (Cat# [RC218076]) using MegaTran 2.0 (Cat# [TT210002]).