

## Product datasheet for PH318073

### NSMCE1 (NM\_145080) Human Mass Spec Standard

#### Product data:

Product Type:	Mass Spec Standards
Description:	NSMCE1 MS Standard C13 and N15-labeled recombinant protein (NP_659547)
Species:	Human
Expression Host:	HEK293
Expression cDNA Clone or AA Sequence:	RC218073
Predicted MW:	30.7 kDa
Protein Sequence:	>RC218073 representing NM_145080 Red=Cloning site Green=Tags(s)  MQGSTRRMGVMTDVHRRFLQLLMTHGVLEEWDVKRLQTHCYKVHNRNATVDKLEDFINNINSVLESYIE IKRGVTEDDGRPIYALVNLATTSISKMATDFAENELDLFRKALELIIDSETGFASSTNILNLVDQLKGGK MRKKEAEQVLQKFVQNKWLIEKEGEFTLHGRAILEMEQYIRETYPDVAVKICNICHSLLIQGQCETCGIR MHLPCVAKYFQSNAEPRCPHCNDYWPHEIPKVFDPKEKERESGVLKSNKSLRSRQH  TRTRPLEQKLISEEDLAANDILDYKDDDDKV
Tag:	C-Myc/DDK
Purity:	> 80% as determined by SDS-PAGE and Coomassie blue staining
Concentration:	>0.05 µg/µL as determined by microplate BCA method
Labeling Method:	Labeled with [U- <sup>13</sup> C <sub>6</sub> , <sup>15</sup> N <sub>4</sub> ]-L-Arginine and [U- <sup>13</sup> C <sub>6</sub> , <sup>15</sup> N <sub>2</sub> ]-L-Lysine
Buffer:	25 mM Tris-HCl, 100 mM glycine, pH 7.3
Storage:	Store at -80°C. Avoid repeated freeze-thaw cycles.
Stability:	Stable for 3 months from receipt of products under proper storage and handling conditions.
RefSeq:	<a href="#">NP_659547</a>
RefSeq Size:	1079
RefSeq ORF:	798
Synonyms:	NSE1
Locus ID:	197370
UniProt ID:	<a href="#">Q8WV22</a>



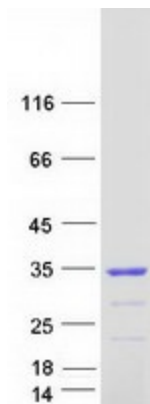
[View online »](#)

Cytogenetics: 16p12.1

**Summary:** RING-type zinc finger-containing E3 ubiquitin ligase that assembles with melanoma antigen protein (MAGE) to catalyze the direct transfer of ubiquitin from E2 ubiquitin-conjugating enzyme to a specific substrate. Within MAGE-RING ubiquitin ligase complex, MAGE stimulates and specifies ubiquitin ligase activity likely through recruitment and/or stabilization of the E2 ubiquitin-conjugating enzyme at the E3:substrate complex. Involved in maintenance of genome integrity, DNA damage response and DNA repair (PubMed:29225034, PubMed:20864041). NSMCE3/MAGEG1 and NSMCE1 ubiquitin ligase are components of SMC5-SMC6 complex and may positively regulate homologous recombination-mediated DNA repair (PubMed:18086888). MAGEF1-NSMCE1 ubiquitin ligase promotes proteasomal degradation of MMS19, a key component of the cytosolic iron-sulfur protein assembly (CIA) machinery. Down-regulation of MMS19 impairs the activity of several DNA repair and metabolism enzymes such as ERCC2/XPD, FANCI, RTEL1 and POLD1 that require iron-sulfur clusters as cofactors (PubMed:29225034).[UniProtKB/Swiss-Prot Function]

Protein Families: Druggable Genome

### Product images:



Coomassie blue staining of purified NSMCE1 protein (Cat# [TP318073]). The protein was produced from HEK293T cells transfected with NSMCE1 cDNA clone (Cat# [RC218073]) using MegaTran 2.0 (Cat# [TT210002]).