

## Product datasheet for PH318048

### LBX1 (NM\_006562) Human Mass Spec Standard

#### Product data:

Product Type:	Mass Spec Standards
Description:	LBX1 MS Standard C13 and N15-labeled recombinant protein (NP_006553)
Species:	Human
Expression Host:	HEK293
Expression cDNA Clone or AA Sequence:	RC218048
Predicted MW:	30 kDa
Protein Sequence:	>RC218048 representing NM_006562 Red=Cloning site Green=Tags(s)  MTSKEDGKAAPGEERRRSPLDHLPPANSNKPLTPFSIEDILNKPSVRRSYSLCGAAHLLAADKHAQGG LPLAGRALLSQTSPLEALEELASKTFKGLEVSVLQAAEGRDGMTIFGQRQTPKKRRKSRTAFTNHQIYEL EKRFYQKYLSPADRQIAQQLGLTNAQVITWFQNRRAKLRDLEEMKADVESAKKLGPSGQMDIVALAE LEQNSEATAGGGGCGRAKSRPGSPVLPAGAPKAPGAGALQLSPASPLTDQPASSQDCSEDEEEDVIDVD  TRTRPLEQKLISEEDLAANDILDYKDDDDKV
Tag:	C-Myc/DDK
Purity:	> 80% as determined by SDS-PAGE and Coomassie blue staining
Concentration:	>0.05 µg/µL as determined by microplate BCA method
Labeling Method:	Labeled with [U- <sup>13</sup> C <sub>6</sub> , <sup>15</sup> N <sub>4</sub> ]-L-Arginine and [U- <sup>13</sup> C <sub>6</sub> , <sup>15</sup> N <sub>2</sub> ]-L-Lysine
Buffer:	25 mM Tris-HCl, 100 mM glycine, pH 7.3
Storage:	Store at -80°C. Avoid repeated freeze-thaw cycles.
Stability:	Stable for 3 months from receipt of products under proper storage and handling conditions.
RefSeq:	<a href="#">NP_006553</a>
RefSeq Size:	1287
RefSeq ORF:	843
Synonyms:	homeobox; HPX-6; HPX6; LBX1H
Locus ID:	10660



[View online »](#)

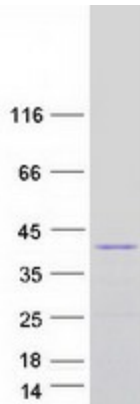
UniProt ID: [P52954](#)

Cytogenetics: 10q24.32

**Summary:** This gene and the orthologous mouse gene were found by their homology to the Drosophila lady bird early and late homeobox genes. In the mouse, this gene is a key regulator of muscle precursor cell migration and is required for the acquisition of dorsal identities of forelimb muscles. [provided by RefSeq, Jul 2008]

**Protein Families:** Transcription Factors

### Product images:



Coomassie blue staining of purified LBX1 protein (Cat# [TP318048]). The protein was produced from HEK293T cells transfected with LBX1 cDNA clone (Cat# [RC218048]) using MegaTran 2.0 (Cat# [TT210002]).