

## Product datasheet for PH318038

### KIF16B (NM\_024704) Human Mass Spec Standard

#### Product data:

Product Type:	Mass Spec Standards
Description:	KIF16B MS Standard C13 and N15-labeled recombinant protein (NP_078980)
Species:	Human
Expression Host:	HEK293
Expression cDNA Clone or AA Sequence:	RC218038
Predicted MW:	152.5 kDa
Protein Sequence:	>RC218038 representing NM_024704 Red=Cloning site Green=Tags(s)

MASVKVAVRVRPMNRREKDLKAKFIIQMEKSKTTITNLKIPEGGTGDSGRERTKTFTYDFSFYSADTKSP  
DYVSQEMVFKTLGTDVVKSFAFEGYNACVFAYGQTGSGKSYTMMGNSGDSGLIPRICEGLFSRINETTRWD  
EASFRTEVSYLEIYNERVRDRLRRKSSKTFNLRVREHPKEGPYVEDLSKHLVQNYGDVEELMDAGNINRT  
TAATGMNDVSSRSHAIIFTIKFTQAKFDSEMPCEVSKIHLVDLAGSERADATGATGVRLKEGGNINKSLV  
TLGNVISALADLSQDAANTLAKKKQVFPYRDSVLTWLLKDSLGGNSKTIAMIATISPADVNYGETLSTLR  
YANRAKNIINKPTINEDANVKLIRELRAEIALRKTLQAQGNQIALLDSPALSMEEKLQQNEARVQELTK  
EWTNKNWNETQNILKEQTLALRKEGIGVLDSELPHLIGIDDDLLSTGIILYHLKEGQTYVGRDDASTEQD  
IVLHGLDLESEHCIFENIGGTVTLIPLSGSQCSVNGVQIVEATHLNQGAIVLLGRNMFNFRNHPKEAAKL  
REKRKSGLLSSFSLSMTDLKSKSRENLSAVMLYNPGLFERQQREELEKLESKRKLIEEMEEKQKSDKAEL  
ERMQQEVETQRKETEIVQLQIRKQEEESLKRFSFHENKLDLLAEKEKFEERLREQQEIELQKQRQEE  
TFLRVQEELQRLKELNNNEKAEKFQIFQELDQLQKEKDEQYAKLELEKKRLEEQEKEQVMLVAHLEEQLR  
EKQEMIQLLRGGEVQWVEEEKRDLEGIRESLLRVKEARAGGEDGEELEKAQLRFFEFKRRQLVKLVNLE  
KDLVQQKDILKKEVQEEQEILECLKCEHDKESRLLEKHDESVDVTEVPQDFEKIKPVEYRLQYKERQLQ  
YLLQNHLPPTLLEEKQRAFEILDRGPLSLDNTLYQVEKEMEEKEEQLAQYQANANQLQKLQATFEFTANIA  
RQEEKVRKKEKEILESREKQQREALERALARERRHSALQRHSTLGMEIEEQRQKLASLNSGSREQSGLQ  
ASLEAEQEALEKDQERLEYEQQLKQKIYEVQVQKDHHTLEGKVASSSLPVSAEKSHLVPLMDARINA  
YIEEEVQRRLQDLHRVISEGCSTADTMKDNEKLNHGTIQRKLKYERMVSRSLGANPDDLKDPKISIPR  
YVLCGQKDAHFEEVKITVLDDETWTVFRYSRFREMHKTLKLYAELAALEFPKPLFGNKDERVIAER  
RSHLEKYL RDFSVMQLSATSPLHINKVGLTSLKHTICEFSPFFKKGVFYSSHGTG

TRTRPLEQKLISEEDLAANDILDYKDDDDKV

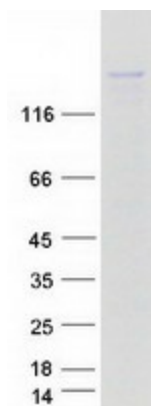
Tag:	C-Myc/DDK
Purity:	> 80% as determined by SDS-PAGE and Coomassie blue staining
Concentration:	>0.05 µg/µL as determined by microplate BCA method



[View online »](#)

<b>Labeling Method:</b>	Labeled with [U- <sup>13</sup> C <sub>6</sub> , <sup>15</sup> N <sub>4</sub> ]-L-Arginine and [U- <sup>13</sup> C <sub>6</sub> , <sup>15</sup> N <sub>2</sub> ]-L-Lysine
<b>Buffer:</b>	25 mM Tris-HCl, 100 mM glycine, pH 7.3
<b>Storage:</b>	Store at -80°C. Avoid repeated freeze-thaw cycles.
<b>Stability:</b>	Stable for 3 months from receipt of products under proper storage and handling conditions.
<b>RefSeq:</b>	<a href="#">NP_078980</a>
<b>RefSeq Size:</b>	5268
<b>RefSeq ORF:</b>	3951
<b>Synonyms:</b>	C20orf23; KISC20ORF; SNX23
<b>Locus ID:</b>	55614
<b>UniProt ID:</b>	<a href="#">Q96L93</a> , <a href="#">A0A140VK74</a>
<b>Cytogenetics:</b>	20p12.1
<b>Summary:</b>	The protein encoded by this gene is a kinesin-like protein that may be involved in intracellular trafficking. Three transcript variants encoding different isoforms have been found for this gene. [provided by RefSeq, Dec 2010]
<b>Protein Families:</b>	Druggable Genome

### Product images:



Coomassie blue staining of purified KIF16B protein (Cat# [TP318038]). The protein was produced from HEK293T cells transfected with KIF16B cDNA clone (Cat# [RC218038]) using MegaTran 2.0 (Cat# [TT210002]).