

Product datasheet for **PH318016**

53BP1 (TP53BP1) (NM_005657) Human Mass Spec Standard

Product data:

Product Type:	Mass Spec Standards
Description:	TP53BP1 MS Standard C13 and N15-labeled recombinant protein (NP_005648)
Species:	Human
Expression Host:	HEK293
Expression cDNA Clone or AA Sequence:	RC218016
Predicted MW:	213.4 kDa



[View online »](#)

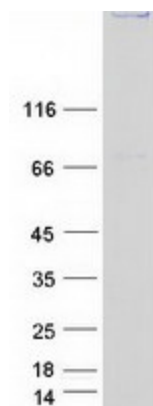
Protein Sequence:	<p>>RC218016 representing NM_005657 Red=Cloning site Green=Tags(s)</p> <p>MDPTGSQLDSDFSQQDTPCLIIEDSQPESQVLEDDSGSHFSMLSRHLPNLQTHKENPVLDDVVSNPQTAG EERGDGNSGFNEHLKENKVADPVDSSNLDTCGSI SQVIEQLPQPNRTSSVLGMSVESAPAVEEEKGEELE QKEKEKEEDTSGNTTHSLGAEDTASSQLGFGVLELSQSQDVEENTVPYEVDKEQLQSVTTNSGYTRLSDV DANTAIKHEEQSNEDIPIAEQSSKIDIPVTAQPSKDVHVVKEQNPPPARSEDMPFSPKASVAAMEAKEQLS AQELMESGLQIQKSPEPEVLSTQEDLFDQSNKTVSSDGCSTPSREEGGCSLASTPATLHLLQLSGQRSL VQESLSTNSSDLVAPSPDAFRSTPFI VPSPTQEGRQDKPMDTSVLSEEGGEPFQKQLQSSPEVLEENP PLLPESTVSPQASTPISQSTPVFPFPGSLPIPSQPQFSDHIFIPSPSLEEQSDGKKGDMHSSSLTVECS KTSEIEPKNSPEDLGLSLTGDSCKLMLSTSEYSQSPKMESSLSSHRIDEDGENTQIEDTEPMSPVLNSKFV PAENDSILMNPAQDGEVQLSQNDDKTKGDDTDTRDDISILATGCKGREETVAEDVCIDLTCDSGSQAVPS PATRSEALSSVLDQEEAMEIKEHHPEEGSSGSEVEEIPETPCESQGEELKEENMESVPLHLSLTETQSQG LCLQKEMPKKECSEAMEVETSVISIDSPQKLAILDQELEHKEQEAWEATSEDSSVIVDVKEPSPRVDV SCEPLEGVEKCSDSQSWEDIAEIEPCAENRLDTKEEKSVYEGDLKSGTAETEPVEQDSSQPSLPLVRA DDPLRLDQELQQPQTQEKTSNSLTEDSKMANAKQLSSDAEAQKLGKPSAHASQSFCESSSETPFHFTLPK EGDIIPPLTGATPPLIGHLKLKLEPKRHSTPIGISNYPESTIATSDVMSESMVETHDPILGSGKGDGSAAPD VDDKLCRLMKLVSPETEASEESLQFNLEKPATGERKNGSTAVAESVASPQKTMSVLSKICARQENEAR EDPPTTPIRGNLLHFPSSQGEKEKLEGDHTIRQSQQPMKPI SPVKDPVSPASQKMIQGPSSPQGEAM VTDVLEDQKEGRSTNQENPSKALIERPSQNNIGIQTMECLSRVPETVSAATQTIKNVCEQGTSTVDQNF KQDATVQTERGSGEKPV SAPGDDTESLHSQGEEDFMPQPPHGHVLRHMRTIREVRTLVTRVITDYYYY DGTEVERKVTEETEEPIVEQCETEVSPSQTGGSSGDLGDISSFSSKASSLHRTSSGTSLSAMHSSGSS GKGAGPLRGKTSGETEPADFALPSSRGGPGKLSPRKGVSTGTVPVCEEDGDAGLGIRQGGKAPVTPRGRGR RGRPPSRTTGTRETAVPGPLGIEDISPNSLSPDDKSF SRVVRVPDSTRRTDVGAGALRRSDSPEIPFQAA AGPSDGLDASSPGNSFVGLRVVAKWSSNGYFYSGKITRDVAGAKYKLLFDDGYECDVLGKDILLCDPIPL DTEVTALSEDEYFSAGVVKGHRKESGELYYSIEKEGQRKWKYKMAVILSLEQGNRLREQYGLGPYEA VTP LTKAADISLDNLVEGKRKRRSNVSSPATPTASSSSSTTPTRKITESPRASMGVLSGKRKLITSEEERSPA KRGRKSATVKPGAVGAGEFVSPCESGDNTGEP SAEQQRGPLPLNKTLFLGYAFLLTMATTSKLASRSK LPDGPTGSSEEEEEFLEIPPFNKQYTESQLRAGAGYILEDFAEQCNTAYQCLLIADQHCRTKRYFLCLA SGIPCVSHVHVHDSCHANQLQNYRNYLLPAGYSLEEQRILDWQPRENPFQNLKVLVSDQQQNFLELWSE ILMTGGAASVKQHSSAHNKDIALGVFDVVVTDPPSCPASVLKCAEALQLPVVVSQEWVIQCLIVGERIGFK QHPKYKHDYVSH</p> <p>TRTRPLEQKLISEEDLAANDILDYKDDDDKV</p>
Tag:	C-Myc/DDK
Purity:	> 80% as determined by SDS-PAGE and Coomassie blue staining
Concentration:	>0.05 µg/µL as determined by microplate BCA method
Labeling Method:	Labeled with [U- ¹³ C ₆ , ¹⁵ N ₄]-L-Arginine and [U- ¹³ C ₆ , ¹⁵ N ₂]-L-Lysine
Buffer:	25 mM Tris-HCl, 100 mM glycine, pH 7.3
Storage:	Store at -80°C. Avoid repeated freeze-thaw cycles.
Stability:	Stable for 3 months from receipt of products under proper storage and handling conditions.
RefSeq:	NP_005648
RefSeq Size:	6266
RefSeq ORF:	5916
Synonyms:	53BP1; p53BP1; p202; TDRD30

Locus ID: 7158
UniProt ID: [Q12888](#)
Cytogenetics: 15q15.3

Summary: This gene encodes a protein that functions in the DNA double-strand break repair pathway choice, promoting non-homologous end joining (NHEJ) pathways, and limiting homologous recombination. This protein plays multiple roles in the DNA damage response, including promoting checkpoint signaling following DNA damage, acting as a scaffold for recruitment of DNA damage response proteins to damaged chromatin, and promoting NHEJ pathways by limiting end resection following a double-strand break. These roles are also important during V(D)J recombination, class switch recombination and at unprotected telomeres. Alternative splicing results in multiple transcript variants encoding different isoforms. [provided by RefSeq, Aug 2017]

Protein Families: Druggable Genome, Transcription Factors

Product images:



Coomassie blue staining of purified TP53BP1 protein (Cat# [TP318016]). The protein was produced from HEK293T cells transfected with TP53BP1 cDNA clone (Cat# [RC218016]) using MegaTran 2.0 (Cat# [TT210002]).