

Product datasheet for PH317990

SCFD1 (NM_016106) Human Mass Spec Standard

Product data:

Product Type:	Mass Spec Standards
Description:	SCFD1 MS Standard C13 and N15-labeled recombinant protein (NP_057190)
Species:	Human
Expression Host:	HEK293
Expression cDNA Clone or AA Sequence:	RC217990
Predicted MW:	72.2 kDa
Protein Sequence:	>RC217990 representing NM_016106 Red=Cloning site Green=Tags(s)

MAAAAAATAAAAASIRERQTVALKRMLNFNVPHIKNSTGEPVWKVLIYDRFGQDIISPLLSVKELRDMGI
TLHLLLHSDRDPDPVPAVYFVMPTEENIDRMCQDLRNQLYESYLNFI SAISRKLEDIANAALAASAV
TQVAKVFDQYLNFI TLEDDMFVLCNQNKELVSYRAINRPDITDTEMETVMDTIVDSLFCFFVTLGAVPII
RCSRGTAAEMVAVKLDKKLRENLRDARNSLFTGDTLGAGQFSFQRPLLVLVDRNIDLATPLHHTWTYQAL
VHDVLDHFLNRVNLEESSGVENSPAGARPKRKNKKSVDLTPVDKFWQKHKGSPFPEVAESVQOELESYRA
QEDEVKRLKSIMGLEGEDEGAISMLSDNTAKLTSVSSPELLEKKRLIDLHTNVATAVLEHIKARKLDV
YFEYEEKIMSKTTLDKSLLDIISDPDAGTPEDKMRLFLIYYISTQQAPSEADLEQYKKALTDAGCNLNP
QYIKQWKAFTKMASAPASYGSTTTKPMGLLSRVMNTGSQFVMEGVKNLVLKQQNLPVTRILDNLMEMKSN
PETDDYRYFDPKMLRGNDSSVPRNKNPFQEAIVFVGGNYIEYQNLVDYIKGKQGHILYGCSELFNAT
QFIKQLSQLGQK

TRTRPLEQKLI SEEDLAANDILDYKDDDDKV

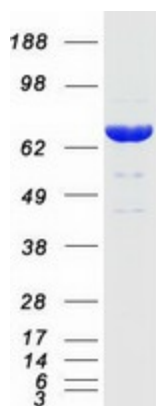
Tag:	C-Myc/DDK
Purity:	> 80% as determined by SDS-PAGE and Coomassie blue staining
Concentration:	>0.05 µg/µL as determined by microplate BCA method
Labeling Method:	Labeled with [U- 13C6, 15N4]-L-Arginine and [U- 13C6, 15N2]-L-Lysine
Buffer:	25 mM Tris-HCl, 100 mM glycine, pH 7.3
Storage:	Store at -80°C. Avoid repeated freeze-thaw cycles.
Stability:	Stable for 3 months from receipt of products under proper storage and handling conditions.
RefSeq:	NP_057190
RefSeq Size:	2172



[View online »](#)

RefSeq ORF:	1926
Synonyms:	C14orf163; RA410; SLY1; SLY1P; STXBP1L2
Locus ID:	23256
UniProt ID:	Q8WVM8
Cytogenetics:	14q12
Summary:	Plays a role in SNARE-pin assembly and Golgi-to-ER retrograde transport via its interaction with COG4. Involved in vesicular transport between the endoplasmic reticulum and the Golgi (By similarity).[UniProtKB/Swiss-Prot Function]

Product images:



Coomassie blue staining of purified SCFD1 protein (Cat# [TP317990]). The protein was produced from HEK293T cells transfected with SCFD1 cDNA clone (Cat# [RC217990]) using MegaTran 2.0 (Cat# [TT210002]).