

Product datasheet for PH317980

Cytohesin 2 (CYTH2) (NM_017457) Human Mass Spec Standard

Product data:

| | |
|---------------------------------------|---|
| Product Type: | Mass Spec Standards |
| Description: | CYTH2 MS Standard C13 and N15-labeled recombinant protein (NP_059431) |
| Species: | Human |
| Expression Host: | HEK293 |
| Expression cDNA Clone or AA Sequence: | RC217980 |
| Predicted MW: | 46.6 kDa |
| Protein Sequence: | >RC217980 protein sequence Red=Cloning site Green=Tags(s) |

MEDGVYEPPDLTPEERMELLENIRRRKQELLVEIQRLREELSEAMSEVEGLEANEKSKTLQRNRKAMGRK
KFNMDPKKGIQFLVENELLQNTPEEIAARFLYKGEGLNKTAIGDYLGEREELNLAVLHAFVDLHEFTDLNL
VQALRQFLWSFRLPGEAQKIDRMMEAFARQYCLCNPVGFQSTDTCYVLSFAVIMLNTSLHNPVNRDKPGL
ERFVAMNRGINEGGDLPEELLRNLYDSIRNEPFKIPEDDGNDLTHTFFNPDREGWLLKLGGRVKTWKRR
WFILTDNCLYYFEYTTDKPRGIIPQENLSIREVDDPRKPNCFELYIPNNKQLIKACKTEADGRVVEGN
HMVYRISAPTQEEKDEWIKSIQAAVSVDPFYEMLAARKKRISVKKKQEQP

TRTRPLEQKLI SEEDLAANDILDYKDDDDKV

| | |
|------------------|--|
| Tag: | C-Myc/DDK |
| Purity: | > 80% as determined by SDS-PAGE and Coomassie blue staining |
| Concentration: | >0.05 µg/µL as determined by microplate BCA method |
| Labeling Method: | Labeled with [U- ¹³ C ₆ , ¹⁵ N ₄]-L-Arginine and [U- ¹³ C ₆ , ¹⁵ N ₂]-L-Lysine |
| Buffer: | 25 mM Tris-HCl, 100 mM glycine, pH 7.3 |
| Storage: | Store at -80°C. Avoid repeated freeze-thaw cycles. |
| Stability: | Stable for 3 months from receipt of products under proper storage and handling conditions. |
| RefSeq: | NP_059431 |
| RefSeq Size: | 4625 |
| RefSeq ORF: | 1200 |
| Synonyms: | ARNO; CTS18; CTS18.1; cytohesin-2; PSCD2; PSCD2L; SEC7L; Sec7p-L; Sec7p-like |
| Locus ID: | 9266 |



[View online »](#)

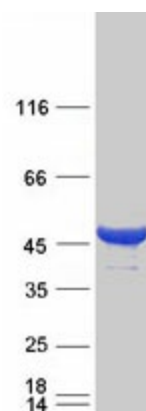
UniProt ID: [Q99418](#)

Cytogenetics: 19q13.33

Summary: The protein encoded by this gene is a member of the PSCD family. Members of this family have identical structural organization that consists of an N-terminal coiled-coil motif, a central Sec7 domain, and a C-terminal pleckstrin homology (PH) domain. The coiled-coil motif is involved in homodimerization, the Sec7 domain contains guanine-nucleotide exchange protein (GEP) activity, and the PH domain interacts with phospholipids and is responsible for association of PSCDs with membranes. Members of this family appear to mediate the regulation of protein sorting and membrane trafficking. The encoded protein exhibits GEP activity in vitro with ARF1, ARF3, and ARF6 and is 83% homologous to CYTH1. Two transcript variants encoding different isoforms have been found for this gene. [provided by RefSeq, Aug 2008]

Protein Families: Druggable Genome

Product images:



Coomassie blue staining of purified CYTH2 protein (Cat# [TP317980]). The protein was produced from HEK293T cells transfected with CYTH2 cDNA clone (Cat# [RC217980]) using MegaTran 2.0 (Cat# [TT210002]).