

## Product datasheet for PH317977

### BAF53A (ACTL6A) (NM\_004301) Human Mass Spec Standard

#### Product data:

Product Type:	Mass Spec Standards
Description:	ACTL6A MS Standard C13 and N15-labeled recombinant protein (NP_004292)
Species:	Human
Expression Host:	HEK293
Expression cDNA Clone or AA Sequence:	RC217977
Predicted MW:	43.25 kDa
Protein Sequence:	>RC217977 representing NM_004301 Red=Cloning site Green=Tags(s)  MVERDDGSTLMEIDGDKGKQGGPTYIDTNALRVPRENMEAISPLKNGMVEDWDSFQAILDHTYKMHVK SEASLHPVLMSEAPWNTRAKREKLTLMFEHYNIPAFFLCKTAVLTAFANGRSTGLILDSGATHHTAIPV HDGYVLQGGIVKSPLAGDFITMQCRELFQEMNIELVPPYMIATKEAVREGSPANWKRKEKLPQVTRSWHN YMCNCVIQDFQASVLQVSDSTYDEQVAQMPTVHYEFPNGYNCDFGAERLKIPEGLFDPSNVKGLSGNTM LGVSHVTTSSVGMCDIDIRPGLYGSVIVAGGNTLIQSFTDRLNRELSQKTPPSMRLKLIANNTTVERRFS SWIGGSILASLGTQQMWISKQYEYEEGGKQCVERKCP  TRTRPLEQKLISEEDLAANDILDYKDDDDKV
Tag:	C-Myc/DDK
Purity:	> 80% as determined by SDS-PAGE and Coomassie blue staining
Concentration:	>0.05 µg/µL as determined by microplate BCA method
Labeling Method:	Labeled with [U- <sup>13</sup> C <sub>6</sub> , <sup>15</sup> N <sub>4</sub> ]-L-Arginine and [U- <sup>13</sup> C <sub>6</sub> , <sup>15</sup> N <sub>2</sub> ]-L-Lysine
Buffer:	25 mM Tris-HCl, 100 mM glycine, pH 7.3
Storage:	Store at -80°C. Avoid repeated freeze-thaw cycles.
Stability:	Stable for 3 months from receipt of products under proper storage and handling conditions.
RefSeq:	<a href="#">NP_004292</a>
RefSeq Size:	1879
RefSeq ORF:	1161
Synonyms:	ACTL6; Arp4; ARPN-BETA; BAF53A; INO80K
Locus ID:	86



[View online »](#)

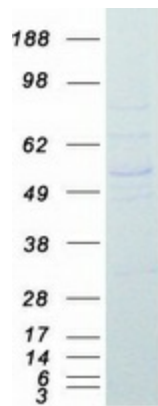
UniProt ID: [O96019](#)

Cytogenetics: 3q26.33

**Summary:** This gene encodes a family member of actin-related proteins (ARPs), which share significant amino acid sequence identity to conventional actins. Both actins and ARPs have an actin fold, which is an ATP-binding cleft, as a common feature. The ARPs are involved in diverse cellular processes, including vesicular transport, spindle orientation, nuclear migration and chromatin remodeling. This gene encodes a 53 kDa subunit protein of the BAF (BRG1/brm-associated factor) complex in mammals, which is functionally related to SWI/SNF complex in *S. cerevisiae* and *Drosophila*; the latter is thought to facilitate transcriptional activation of specific genes by antagonizing chromatin-mediated transcriptional repression. Together with beta-actin, it is required for maximal ATPase activity of BRG1, and for the association of the BAF complex with chromatin/matrix. Three transcript variants that encode two different protein isoforms have been described. [provided by RefSeq, Jul 2008]

**Protein Families:** Druggable Genome, Transcription Factors

### Product images:



Coomassie blue staining of purified ACTL6A protein (Cat# [TP317977]). The protein was produced from HEK293T cells transfected with ACTL6A cDNA clone (Cat# [RC217977]) using MegaTran 2.0 (Cat# [TT210002]).