

## Product datasheet for PH317944

### PTP4A3 (NM\_007079) Human Mass Spec Standard

#### Product data:

Product Type:	Mass Spec Standards
Description:	PTP4A3 MS Standard C13 and N15-labeled recombinant protein (NP_009010)
Species:	Human
Expression Host:	HEK293
Expression cDNA Clone or AA Sequence:	RC217944
Predicted MW:	16.6 kDa
Protein Sequence:	>RC217944 representing NM_007079 Red=Cloning site Green=Tags(s)  MARMNRPAPVEVSYKHMRFILITHNPTNATLSTFIEDLKKYGATTVVRVCEVTYDKTPLEKDGITVVDWPF DDGAPPPGKVVEDWLSLVKAKFCEAPGSCVAVHCVAGLGRKRRGAINSKQLTYLEKYRPKQRLRFKDPHT HKTRCCVM  TRTRPLEQKLI SEEDLAANDILDYKDDDDKV
Tag:	C-Myc/DDK
Purity:	> 80% as determined by SDS-PAGE and Coomassie blue staining
Concentration:	>0.05 µg/µL as determined by microplate BCA method
Labeling Method:	Labeled with [U- 13C6, 15N4]-L-Arginine and [U- 13C6, 15N2]-L-Lysine
Buffer:	25 mM Tris-HCl, 100 mM glycine, pH 7.3
Storage:	Store at -80°C. Avoid repeated freeze-thaw cycles.
Stability:	Stable for 3 months from receipt of products under proper storage and handling conditions.
RefSeq:	<u>NP_009010</u>
RefSeq Size:	1321
RefSeq ORF:	444
Synonyms:	PRL-3; PRL-R; PRL3
Locus ID:	11156
UniProt ID:	<u>O75365</u>



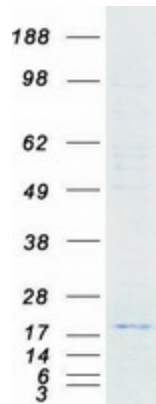
[View online »](#)

**Cytogenetics:** 8q24.3

**Summary:** This gene encodes a member of the protein-tyrosine phosphatase family. Protein tyrosine phosphatases are cell signaling molecules that play regulatory roles in a variety of cellular processes. Studies of this class of protein tyrosine phosphatase in mice demonstrates that they are prenylated in vivo, suggesting their association with cell plasma membrane. The encoded protein may enhance cell proliferation, and overexpression of this gene has been implicated in tumor metastasis. Alternative splicing results in multiple transcript variants. [provided by RefSeq, Jul 2013]

**Protein Families:** Druggable Genome, Phosphatase

**Product images:**



Coomassie blue staining of purified PTP4A3 protein (Cat# [TP317944]). The protein was produced from HEK293T cells transfected with PTP4A3 cDNA clone (Cat# [RC217944]) using MegaTran 2.0 (Cat# [TT210002]).