

Product datasheet for PH317934

IRF7 (NM_001572) Human Mass Spec Standard

Product data:

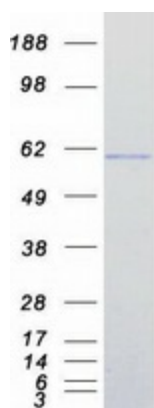
Product Type:	Mass Spec Standards
Description:	IRF7 MS Standard C13 and N15-labeled recombinant protein (NP_001563)
Species:	Human
Expression Host:	HEK293
Expression cDNA Clone or AA Sequence:	RC217934
Predicted MW:	54.1 kDa
Protein Sequence:	>RC217934 representing NM_001572 Red=Cloning site Green=Tags(s)
	MALAPERAAPRVLFGEWLLGEISSGCYEGQLQWLDEARTCFRVPWKHFARKDLSEADARIFKAWAVARGRW PPSSRGGGPPPEAETAERAGWKTNFRCLRSTRRFVMLRDNSGDPADPHKVYAL SRELCWREGPGTDQTE AEAPAAVPPPQGGPPGF LAHTHAGLQAPGPLPAPAGDKGDL LQAVQQSCLADHLLTASWGADPVPTKA PGEQGEGLPLTGACAGGPGLPAGELYGWAVETTPSPGPQPAALTTGEEAAPESPHQAEPYLSPPSACTA VQEPSPGALDVTIMYKGRVTLQKVVGHPSCFTLYGPPDPAVRATDPQQVAFPSPAELPDQKQLRYTEELL RHHVAPGLHLELRGPQLWARRMGKCKVYWEVGGPPGSASPSTPACLLPRNCDTPIFDVRVFFQELVEFRAR QRRGSPRYTIYLGFGQDL SAGRPKEKSLVLVKLEPWLCRVHLEGTQREGVSSLDSSLSLCLSSANSLYD DIECFLMELEQPASGP
	SGPTRRRLEQKLI SEEDLAANDILDYKDDDDKV
Tag:	C-Myc/DDK
Purity:	> 80% as determined by SDS-PAGE and Coomassie blue staining
Concentration:	>0.05 µg/µL as determined by microplate BCA method
Labeling Method:	Labeled with [U- 13C6, 15N4]-L-Arginine and [U- 13C6, 15N2]-L-Lysine
Buffer:	25 mM Tris-HCl, 100 mM glycine, pH 7.3
Storage:	Store at -80°C. Avoid repeated freeze-thaw cycles.
Stability:	Stable for 3 months from receipt of products under proper storage and handling conditions.
RefSeq:	<u>NP_001563</u>
RefSeq Size:	1890
RefSeq ORF:	1518



[View online »](#)

Synonyms:	IMD39; IRF-7; IRF-7H; IRF7A; IRF7B; IRF7C; IRF7H
Locus ID:	3665
UniProt ID:	Q92985
Cytogenetics:	11p15.5
Summary:	IRF7 encodes interferon regulatory factor 7, a member of the interferon regulatory transcription factor (IRF) family. IRF7 has been shown to play a role in the transcriptional activation of virus-inducible cellular genes, including interferon beta chain genes. Inducible expression of IRF7 is largely restricted to lymphoid tissue. Multiple IRF7 transcript variants have been identified, although the functional consequences of these have not yet been established. [provided by RefSeq, Jul 2008]
Protein Families:	Transcription Factors
Protein Pathways:	Cytosolic DNA-sensing pathway, RIG-I-like receptor signaling pathway, Toll-like receptor signaling pathway

Product images:



Coomassie blue staining of purified IRF7 protein (Cat# [TP317934]). The protein was produced from HEK293T cells transfected with IRF7 cDNA clone (Cat# [RC217934]) using MegaTran 2.0 (Cat# [TT210002]).