

Product datasheet for PH317905

Myosin Phosphatase 2 (PPP1R12B) (NM_032104) Human Mass Spec Standard

Product data:

Product Type:	Mass Spec Standards
Description:	PPP1R12B MS Standard C13 and N15-labeled recombinant protein (NP_115287)
Species:	Human
Expression Host:	HEK293
Expression cDNA Clone or AA Sequence:	RC217905
Predicted MW:	26.1 kDa
Protein Sequence:	>RC217905 representing NM_032104 Red=Cloning site Green=Tags(s) MDKNENEADLDEQSSKRLSIRERRRPKERRRGTGINFWTKDEDETDGSEEVKETWHERLSRLESGSNP TTSDSYGDRASARREAREARLATLTSRVEEDSNRDYKLYESALTENQKLKTKLQEAQLELADIKSKL EKVAQQKQEKTSRSSHVLEMEKRERRALERKMSEMEEMKNLHQLKQIQTLKQMNEQLQAENRALTRVVA RLSESISSDTQEL TRTRPLEQKLISEEDLAANDILDYKDDDDKV
Tag:	C-Myc/DDK
Purity:	> 80% as determined by SDS-PAGE and Coomassie blue staining
Concentration:	>0.05 µg/µL as determined by microplate BCA method
Labeling Method:	Labeled with [U- ¹³ C ₆ , ¹⁵ N ₄]-L-Arginine and [U- ¹³ C ₆ , ¹⁵ N ₂]-L-Lysine
Buffer:	25 mM Tris-HCl, 100 mM glycine, pH 7.3
Storage:	Store at -80°C. Avoid repeated freeze-thaw cycles.
Stability:	Stable for 3 months from receipt of products under proper storage and handling conditions.
RefSeq:	NP_115287
RefSeq Size:	2227
RefSeq ORF:	672
Synonyms:	MYPT2; PP1bp55
Locus ID:	4660
UniProt ID:	O60237



[View online »](#)

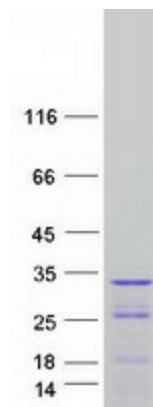
Cytogenetics: 1q32.1

Summary: Myosin phosphatase is a protein complex comprised of three subunits: a catalytic subunit (PP1c-delta, protein phosphatase 1, catalytic subunit delta), a large regulatory subunit (MYPT, myosin phosphatase target) and small regulatory subunit (sm-M20). Two isoforms of MYPT have been isolated--MYPT1 and MYPT2, the first of which is widely expressed, and the second of which may be specific to heart, skeletal muscle, and brain. Each of the MYPT isoforms functions to bind PP1c-delta and increase phosphatase activity. This locus encodes both MYTP2 and M20. Alternatively spliced transcript variants encoding different isoforms have been identified. Related pseudogenes have been defined on the Y chromosome. [provided by RefSeq, Oct 2011]

Protein Families: Druggable Genome

Protein Pathways: Vascular smooth muscle contraction

Product images:



Coomassie blue staining of purified PPP1R12B protein (Cat# [TP317905]). The protein was produced from HEK293T cells transfected with PPP1R12B cDNA clone (Cat# [RC217905]) using MegaTran 2.0 (Cat# [TT210002]).