

Product datasheet for PH317900

RAB27A (NM_183234) Human Mass Spec Standard

Product data:

Product Type:	Mass Spec Standards
Description:	RAB27A MS Standard C13 and N15-labeled recombinant protein (NP_899057)
Species:	Human
Expression Host:	HEK293
Expression cDNA Clone or AA Sequence:	RC217900
Predicted MW:	24.9 kDa
Protein Sequence:	>RC217900 protein sequence Red=Cloning site Green=Tags(s) MSDGDYDYLIKFLALGDSGVGKTSVLYQYTDGKFNSKFITTVGIDFREKRVVYRASGPDGATGRGQRIHL QLWDTAGQERFRSLTTAFFRDAMGFLLLFDLTNEQSFLNVRNWISQLQMHAYCENPDIVLCGNKSDLEDQ RVYKEEEEIALAEKYGIPYFETSAANGTNISQAIEMLLDLIMKRMERCVDKSWIPEGVVRSNGHASTDQL SEEKEKGACGC TRTRPLEQKLI SEEDLAANDILDYKDDDDKV
Tag:	C-Myc/DDK
Purity:	> 80% as determined by SDS-PAGE and Coomassie blue staining
Concentration:	>0.05 µg/µL as determined by microplate BCA method
Labeling Method:	Labeled with [U- ¹³ C ₆ , ¹⁵ N ₄]-L-Arginine and [U- ¹³ C ₆ , ¹⁵ N ₂]-L-Lysine
Buffer:	25 mM Tris-HCl, 100 mM glycine, pH 7.3
Storage:	Store at -80°C. Avoid repeated freeze-thaw cycles.
Stability:	Stable for 3 months from receipt of products under proper storage and handling conditions.
RefSeq:	NP_899057
RefSeq Size:	3455
RefSeq ORF:	663
Synonyms:	GS2; HsT18676; RAB27; RAM
Locus ID:	5873
UniProt ID:	P51159 , A2RU94



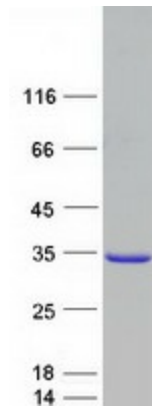
[View online »](#)

Cytogenetics: 15q21.3

Summary: The protein encoded by this gene belongs to the small GTPase superfamily, Rab family. The protein is membrane-bound and may be involved in protein transport and small GTPase mediated signal transduction. Mutations in this gene are associated with Griscelli syndrome type 2. Alternative splicing occurs at this locus and four transcript variants encoding the same protein have been identified. [provided by RefSeq, Jul 2008]

Protein Families: Druggable Genome

Product images:



Coomassie blue staining of purified RAB27A protein (Cat# [TP317900]). The protein was produced from HEK293T cells transfected with RAB27A cDNA clone (Cat# [RC217900]) using MegaTran 2.0 (Cat# [TT210002]).